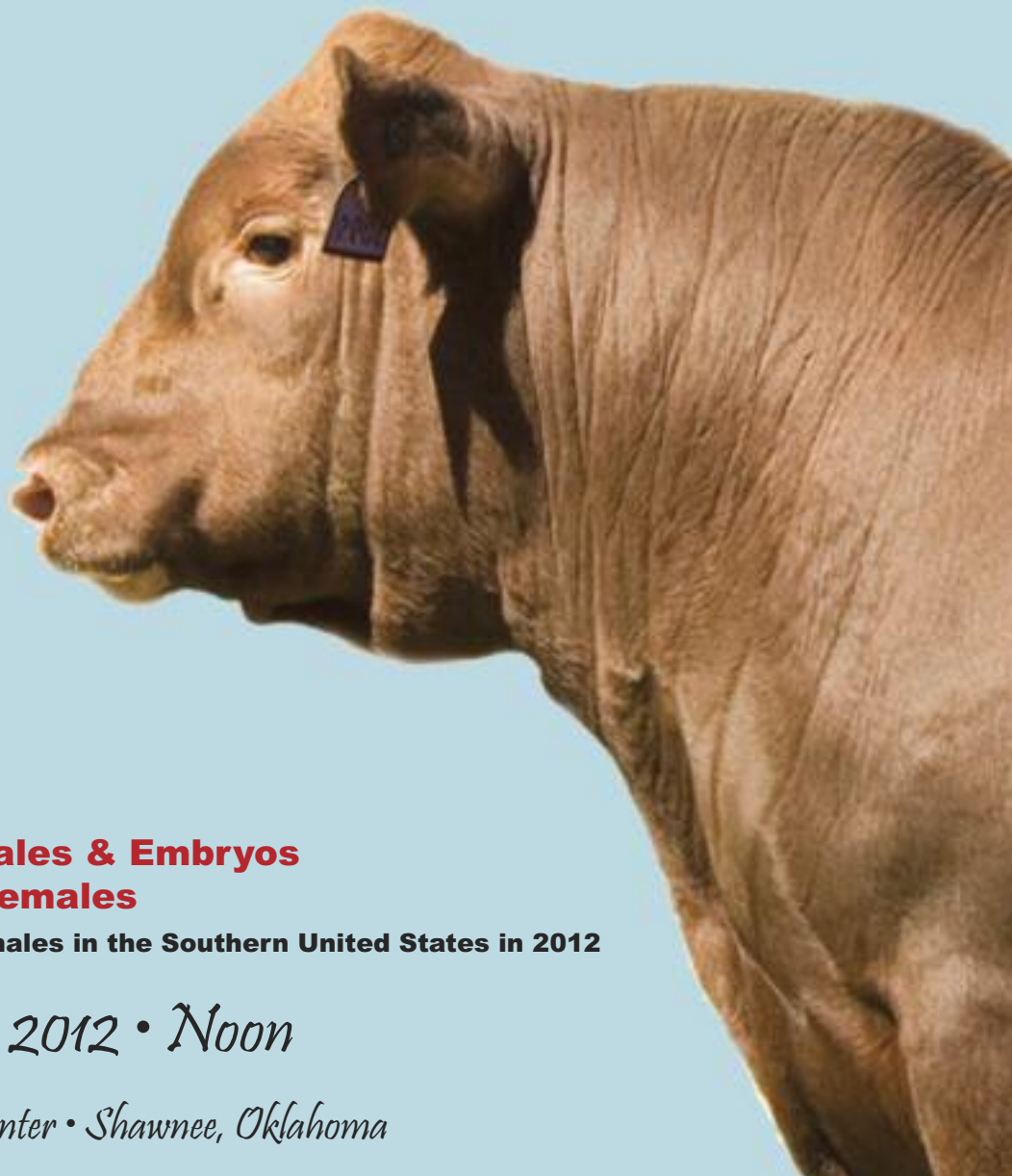


ALLIANCE

11th Annual Spring Production Sale



62 Red Angus Bulls
1A 100% Red Angus Females & Embryos
Commercial Red Angus Females

Largest selection of Red Angus females in the Southern United States in 2012

Saturday, March 10, 2012 • Noon

Heart of Oklahoma Exposition Center • Shawnee, Oklahoma

Welcome folks...

This is our 11th sale in 9 years! As we all know this past year tested the commitment of cattle producers throughout the central plains states. Oklahoma and Texas producers liquidated 1.6 million head of cattle due to drought conditions that prompted the sell-off.

Repercussions as a result of last year's drought event will lead to a boom in cattle prices for many years to come. The US cow herd simply will not be able to rebuild in a few short years. Those of us that were able to endure the past year will reap high reward benefits with calf prices and beef values at all-time highs.

This year we are selling fewer bulls than in the past due to two reasons. In all honesty our Spring born calves were challenged more than usual by the extreme heat and very poor range conditions. As a result our team members culled deeper than usual before sending calves to the performance test. Secondly, after being placed on test some calves simply did not have the healthy vigor that we expect and those calves were eliminated from consideration for this sale. The end result is a group of bulls that are very tough survivors! If they can withstand the events of the past 12 months they can handle anything the world can throw at them.

The bulls are developed at Alfadale Stock Farms on a forage based diet that is intended to ensure longevity. Our target gain has been 3.5 lbs. per day. We hit that number dead on this year. The folks at Alfadale have done a wonderful job developing the bulls and making the appropriate adjustments in the feed ration to achieve our goal of producing bulls that have grown and not become overly fat on a heavy grain based diet. There is a major difference in our program!

Quite often we seek the advice of ranchers who buy our bulls and ask if we are on the right track. Buyers like Gregg Arnold from Campbell Ranches has shared with us that he believes our bulls get better and better every year. Most importantly he strongly endorses our philosophy regarding the feed program. That validation from Gregg and many others is very important to our team.

The vast majority of our bulls are sold to commercial operators like Campbell Ranches. Longevity and sound feet are requirements, not a desire! If you consider other options than the Red Alliance program makes sure that you ask what type of ration was used to develop the bulls

Due to the need for replacement females we have added more than we usually offer. This offering will be the largest number of straight Red Angus females (registered and commercial) offered in the Oklahoma and Texas area in over 18 months. If you need replacement females (and who doesn't?) this will be the place to find them. Before the reality of how much replacement females will cost take advantage of this offering now before values really spike. For seed stock producers the quality you seek for elite genetics is here. As always we also offer a wide selection of registered females for those folks who are just getting started with the Red Angus breed. Last but not least, the commercial female offering is really nice with a strong set of fancy looking heifers.

Our team makes extensive use of artificial insemination and embryo transfer. In addition we select for the highest quality of seed stock bulls for our herd sires. It is that simple. We do not get caught up in the hyperbole that is so often used in catalogs. None of us have cows sitting in a "donor pen" being pampered and fed rocket fuel. Our donor cows work out in the pasture right alongside the commercial cattle. They have to work in that environment or else their progeny will not work for you in your environment. When it comes to females being offered we don't "dig deep into our herds to bring the best to town". We simply bring cattle that we believe will represent our program well and serve you for many years to come.

For many of us the rain received over the past 3-4 months has returned us to a sense of normalcy, wheat and rye pastures are bright green, ponds that were once bone dry are now full and we have had a mild winter. The moisture will allow our pastures to recover and allow us to get back to business as usual.

We look forward to seeing all of our repeat customers and meeting new friends on sale day.

Warm regards,
The Red Alliance Team



DVAuction Broadcasting Real-Time Auctions

Can't make the sale? Bid from home with DV Auction's "real-time" internet bidding service!

Buying online is as easy as 1, 2, 3...

1. Create an account at www.dvauction.com under the "register" tab and watch our online bidding tutorial
2. Apply for bidding approval by clicking on the "details" tab at least 24 hours prior to the auction-a DV representative will notify you once you have been approved
3. Tune in for the sale and make your purchases!

After the sale, contact the sale manager or owner to arrange transportation and payment. **High speed internet** is required for successful bidding-be sure to check the lag-time monitor in the top left corner to ensure real-time broadcasts.

Proxy Bidding-if you can't make time to watch the sale, register a proxy bid and let our system represent your bid while you're away. Look for the "proxy bid" tab on the auction listing, and fill in your maximum bids. We'll handle the rest!

Having troubles? Call Tami at (308) 870-3661 or email tami@dvauction.com. Our full-time support team can also always be reached at (402) 474-5557.

DVAuction
Broadcasting Real-Time Auctions

Full Service Livestock Marketing
Internet Auction Broadcast & Bidding - Video - Photography - Banner Ads
The Stock Exchange - Ring Service - Onsite Viewing Service



Red Alliance Spring Auction

Saturday, March 10, 2012 • Noon • Sale day lunch served at 11 a.m.
Heart of Oklahoma Exposition Center • Shawnee, Oklahoma

Sale Location – 1700 W. Independence, Shawnee, OK 74802-1466

Shawnee is an all-weather facility that is completely enclosed. It is located approximately 5 miles south of Interstate 40 from the 181 exit. Turn east on to Darrien Gordon Drive.



Schedule of Events

Friday, March 9, 2012

2-7 p.m. Cattle available for viewing

Saturday, March 10, 2012

8 a.m. Cattle available for viewing

11 a.m. Sale Day lunch served

Noon Auction begins with bulls selling first followed by registered females and commercial females

Sale Day Phones

Kyle Gilchrist: 641-919-1077 • Brian Whisnand: 214-762-8541

Jeff Earles: 580-220-8160 • Randy Wickman: 972-658-6523

John Macek: 903-348-2138 • Gregg Weber: 580-527-1902

Hotel Headquarters

La Quinta Inn: 5401 Enterprise Court, Shawnee, Oklahoma
405-275-7930

Please note: A block of 20 rooms have been reserved for March 9-10 at a rate of \$79 plus tax and will be held until February 24th. Please mention Red Alliance to get the special rate and make your reservations before February 24th. Many hotels are already close to being sold out.

Sale Day Veterinarian

Dr. Mike Steward, Shawnee Animal Hospital: 405-275-0990

Visit our website at:

www.redalliance.biz or www.redcows.net

Breeding Guarantee

— All bulls are guaranteed in accordance with the terms and conditions recommended by the Red Angus Association of America. This guarantee does not cover mortality and we encourage buyers to consider buying an insurance policy. All bulls covered by our guarantee will require that we retain salvage value for the bull. Any bull kept for 30 days immediately following the sale will incur a \$500 "breeding use" fee. Any bulls returned to Red Alliance for injury or non-performance may require a vet statement. All bulls returned for a guarantee must be returned to a member's ranch within 14 days of submitting the claim. Our guarantee will provide for a full replacement bull of equal quality and value or a full purchase credit to be used in future Red Alliance auctions.

Insurance

— Mortality Insurance available through Hugh F. Miller Insurance Agency, Inc. Representative of American Livestock Inc. Contact Kyle Gilchrist for more information.

Buyer Representatives/Ringmen

Randy Woodward, Oklahoma Cowman: 918-557-3095

Jeff Hallowell, The Stock Exchange: 405-922-4648

Ralph Means, Weekly Livestock Reporter: 817-235-9708

These buyer representatives are available to assist in making your purchases. Feel free to give them a call to place bids or for live evaluations of cattle at the auction.

Special Guest

Larry Keenan, RAAA Director of Breed Improvement

Fertility Testing/ Health

— Every bull has been fertility checked and passed a breeding soundness exam. In addition each bull has been tested for BVD-PI. Every bull in the sale is a virgin bull. All bulls, regardless of age, will be tested for Trichomoniasis.

Sight Unseen Purchase Guarantee

— Buyers unable to attend the sale may call the Sale Manager or Ringmen. We guarantee complete satisfaction for all cattle purchased in this manner.

Delivery Information

— Central delivery points to Oklahoma, Missouri, Texas and Iowa. Including Ardmore, Abilene, Houston, Bonham, Gainesville, Sherman, Ft. Worth, Sulphur Springs, Joplin, Springfield, Kansas City and the I-35 corridor to southern Iowa.

Sale management by:



Gilchrist Auction Co.

Kyle Gilchrist: 641/919-1077

14075 120th St. • Douds, IA 52551

redcowseller@yahoo.com

A production of
Star G Ranch, Inc.



FLC Hamley 09 • Lot 1

Lot 1 FLC HAMLEY 09

Bull

1A 100%

DOB: 09/12/2010 Tattoo: 09 FLC Test Tag 34 Reg. #: 1424642

PIE BILLINGS 487 [OSF]

NBAR HAMLEY S913 [OSF]

NBAR KELLY 913

NEO-SHO CAYMAN G563

PELTONS MISS VERA 0637P [OSF]

PELTONS MISS IRIS 0134K

ADG	3.80 lbs	Ratio	104
WDA	2.71 lbs	Ratio	92
Test Index	98	Frame	5.5
REA	MARB	BFAT	
13.0	4.15	.25	

BW 100 lbs./BR 112; WW 718 lbs./WR 98

CED	BW	WW	YW	MILK	TM	ME	HPG	CEM	STAY	MARB	YG	CW	REA	FAT
0	1.9	31	54	11	27	6	10	6	7	0.14	0.01	35	0.14	-0.01

- A big, stout stud bull with a capacious heart girth and deep flank
- Sire is the smooth designed, show winning producer -- Hamley
- Dam is from the famed Pelton Red Angus and Simmental program of Kansas



JCBB Western Sky 082X ET • Lot 2

Lot 2 JCBB WESTERN SKY 082X ET

Bull

1A 100%

DOB: 10/11/2010 Tattoo: 082 JCBB Test Tag 40 Reg. #: 1422495

BIEBER MAKE MIMI 7249 [MAF,OSF]

FEDDES BIG SKY R9 [MAF,OSF]

FEDDES LAKINA 310 [OSF]

TKP BODACIOUS 693 [OSF]

MEADO-WEST BAILEY 019K [OSF]

MEADO-WEST 105F

ADG	4.46 lbs	Ratio	122
WDA	3.40 lbs	Ratio	115
Test Index	118	Frame	6.7
REA	MARB	BFAT	
15.9	4.05	.23	

BW 81 lbs./BR ; WW 749 lbs./WR ; YW 1128 lbs./YR

CED	BW	WW	YW	MILK	TM	ME	HPG	CEM	STAY	MARB	YG	CW	REA	FAT
3	-2.1	26	47	24	37	5	15	-3	7	0.08	-0.14	25	-0.11	-0.05

- A fantastic stud bull sired by the \$41,000 Feddes Big Sky
- One of the longest bodied bulls in the 2012 Red Alliance Test
- Dam is a top producing 106.2 MPPA Bodacious daughter and has produced stud sire SLGN Regulator and national champion Bailey's TESS.



3J Dakbaro X410 • Lot 3

Lot 3 3J DAKBARO X410

Bull

1A 100%

DOB: 10/22/2010 Tattoo: X410 3JF Test Tag 17 Reg. #: 1430232

BJR HIGH CAPACITY 008 [MAF,OSF]

UBAR HIGH CAPACITY 224 [OSF]

BJR BONNEBELL 7G

OHRR DAKOTA COPPER 29K [MAF,OSF]

3J MS DAKOTA DAY S87

BROWN MS MAKE MY DAY L6

ADG	3.56 lbs	Ratio	97
WDA	2.90 lbs	Ratio	98
Test Index	98	Frame	6.0
REA	MARB	BFAT	
15.5	3.96	.21	

BW 89 lbs./BR 115; WW 658 lbs./WR 96

CED	BW	WW	YW	MILK	TM	ME	HPG	CEM	STAY	MARB	YG	CW	REA	FAT
-1	2.8	55	97	18	45	10	11	3	7	-0.05	0.01	62	0.28	0.00

- A big volumed, free moving October bull
- Sire is the \$51,000 (now deceased) UBAR High Capacity 224
- Dam is a solid 3J cow with a 101.6 MPPA and sired by the ever popular Dakota Copper

Lot 4 JCBB RELIANT 096X

Bull

1A 100%

DOB: 11/28/2010 Tattoo: 096 JCBB Test Tag 42 Reg. #: 1409574

RED SIX MILE AVIATOR 217P [OSF]

RED SIX MILE SAKIC 832S [MAF,OSF]

RED SIX MILE SIERA 257P [OSF]

NSF LORENZO L415

3J MS LORENZO-SHO R174

J LADY 119N

ADG	4.81 lbs	Ratio	131
WDA	3.54 lbs	Ratio	120
Test Index	126	Frame	6.3
REA	MARB	BFAT	
15.3	3.87	.23	

BW 86 lbs./BR 104; WW 710 lbs./WR 100; YW 1206 lbs./YR 100

CED	BW	WW	YW	MILK	TM	ME	HPG	CEM	STAY	MARB	YG	CW	REA	FAT
1	1.3	42	72	19	40	3	11	7	8	-0.34	0.01	45	-0.10	-0.02

- Big, stout "warhorse" and top indexing bull of the entire 2012 Red Alliance
- Phenomenal growth with a 3.54 lb WDA
- Sired by the Canadian sensation Sakic -- offers outcross opportunities



JCBB Reliant 096X • Lot 4

Lot 5 1050 MBR

Bull

1A 100%

DOB: 09/09/2010 Tattoo: 1050 MBR Test Tag 58 Reg. #: 1422473

BECKTON LANCER F442 T [MAF,OSF]

BROWN-CH EMINENCE S3535

CEDAR HILL 39N

GLACIER MARIAS 548 [MAF,OSF]

LSF SABRINA E512 N3201

PARK MISS WIDELOAD E512

ADG	3.06 lbs	Ratio	84
WDA	2.34 lbs	Ratio	79
Test Index	81	Frame	4.2
REA	MARB	BFAT	
14.0	4.16	.30	

BW 74 lbs./BR 100; WW 520 lbs./WR 100

CED	BW	WW	YW	MILK	TM	ME	HPG	CEM	STAY	MARB	YG	CW	REA	FAT
5	-1.0	28	50	12	26	5	7	5	14	0.12	-0.05	29	0.03	0.00

- Straight topped bull with great extension through shoulders to neck
- Moderate frame with calving ease suitable for heifers
- Sire is the sensational Lancer son from Brown's -- Eminence S3535



3J Oskar • Lot 6

Lot 6 3J OSKAR

Bull

1A 100%

DOB: 10/10/2010 Tattoo: 02 3JF Test Tag 2 Reg. #: 1442106

RED NORTHLINE ROB ROY 122K [MAF,OSF]

RED DMM BRYLOR THUMP 2T [OSF]

RED STEN ESSENCE 42G

JDW CHEROKEE CHIEF 877 [OSF]

2022 JAN MILLER CHIEF [OSF]

JAN 9707 SUPERIOR CHIEF [OSF]

ADG	3.30 lbs	Ratio	90
WDA	2.66 lbs	Ratio	90
Test Index	90	Frame	4.9
REA	MARB	BFAT	
14.8	3.93	.27	

BW 79 lbs./BR ; WW 626 lbs./WR

CED	BW	WW	YW	MILK	TM	ME	HPG	CEM	STAY	MARB	YG	CW	REA	FAT
4	0.2	29	52	13	28	1	9	4	6	-0.10	0.00	32	-0.23	-0.02

- Super thick and well muscled Thump son
- Moderate framed for high efficiency with calving ease suitable for heifers
- Dam is the famed Jan Miller Chief cow producing top Red Alliance Bulls in the past

Lot 7 3J MARC-JOB

Bull

1A 100%

DOB: 10/07/2010 Tattoo: 03 3JF Test Tag 3 Reg. #: 1442107

RED NORTHLINE ROB ROY 122K [MAF,OSF]

RED DMM BRYLOR THUMP 2T [OSF]

RED STEN ESSENCE 42G

JDW CHEROKEE CHIEF 877 [OSF]

2022 JAN MILLER CHIEF [OSF]

JAN 9707 SUPERIOR CHIEF [OSF]

ADG	4.13 lbs	Ratio	113
WDA	2.90 lbs	Ratio	98
Test Index	105	Frame	5.9
REA	MARB	BFAT	
15.4	4.27	.26	

BW 81 lbs./BR ; WW 607 lbs./

CED	BW	WW	YW	MILK	TM	ME	HPG	CEM	STAY	MARB	YG	CW	REA	FAT
4	0.2	29	52	13	28	1	9	4	6	-0.10	0.00	32	-0.23	-0.02

- Flushmate brother to Lot 6 in a 5.9 frame stature
- High ADG bull in the Fall Division with a 4.13 lb ADG to ratio 113
- High scan values equate to superior carcass qualities in his progeny



FLC Advancer 020 • Lot 9

Lot 8 FLC INCREDIBULL 012 Bull

1A 100%

DOB: 09/23/2010 Tattoo: 012 FLC Test Tag 35 Reg. #: 1424643

1BWJ JULIAN 17P [MAF,OSF]

RED HILL 17P JULIAN 101S [MAF,OSF]

1BWJ BARMAID 54P [MAF,OSF]

NEO-SHO CAYMAN G563

PELTONS MISS VERA 0637P [OSF]

PELTONS MISS IRIS 0134K

ADG	4.20 lbs	Ratio	115
WDA	2.70 lbs	Ratio	91
Test Index	103	Frame	5.5
REA	MARB	BFAT	
15.6	4.05	.18	

BW 86 lbs./BR ; WW 734 lbs./WR

CED	BW	WW	YW	MILK	TM	ME	HPG	CEM	STAY	MARB	YG	CW	REA	FAT
3	0.8	38	64	11	30	2	11	4	14	0.26	-0.05	39	0.09	-0.01

- Deep made, soggy bull with excellent scan data
- Top ADG bull in the Fall Division with a 4.20 to ratio 115
- Great combination of Red Hill Julian from a super Pelton cow

Lot 9 FLC ADVANCER 020 Bull

1A 100%

DOB: 10/10/2010 Tattoo: 020 FLC Test Tag 36 Reg. #: 1424647

RBJR ADVANCE A709 [MAF,OSF]

PERKS ADVANCER 9088 [MAF,OSF]

HMV MS RAMBO 502

NEO-SHO DIRECT TICKET M517 [OSF]

PELTONS MISS KATE 0659P [OSF]

PELTON MISS ROBI 2676M [OSF]

ADG	3.34 lbs	Ratio	91
WDA	2.77 lbs	Ratio	94
Test Index	93	Frame	5.7
REA	MARB	BFAT	
13.1	4.38	.41	

BW 80 lbs./BR 90; WW 671 lbs./WR 100

CED	BW	WW	YW	MILK	TM	ME	HPG	CEM	STAY	MARB	YG	CW	REA	FAT
4	0.0	40	78	18	38	10	6	4	6	0.03	-0.03	47	0.04	-0.02

- Super long bodied bull offering added pounds in his progeny through length
- Balanced set of EPDs with high growth and good maternal traits
- Sired by the famed Advancer 9088 from a top Pelton cow of Kansas

Lot 10 3J TUCKER X53 Bull

1A 100%

DOB: 11/09/2010 Tattoo: X533JF Test Tag 7 Reg. #: 1430245

BADLANDS ALL BEEF 114J [MAF,OSF]

BADLANDSPFFRBEEFMAKER638 [OSF]

PFFR CEDAR 3006 [OSF]

RED GRAHAM NEW DEAL 332N

RED GRAHAM LADY M 659S

RED LADY M OF KINARED 524N

ADG	4.35 lbs	Ratio	119
WDA	2.78 lbs	Ratio	94
Test Index	107	Frame	5.7
REA	MARB	BFAT	
15.0	3.56	.19	

BW 82 lbs./BR 106; WW 708 lbs./WR 104

CED	BW	WW	YW	MILK	TM	ME	HPG	CEM	STAY	MARB	YG	CW	REA	FAT
1	3.5	47	84	16	39	3	11	5	10	0.07	-0.01	56	0.18	-0.01

- Beefmaker 638 sire has proven to be a top REA maker in past Red Alliance Tests
- Dam is a total U.S. outcross and a great Canadian brood matron
- Superior ADG of 4.35 lbs to ratio 119 in a strong Red Alliance Bull Test



JCBB Mr. October 085X • Lot 11

Lot 11 JCBB MR. OCTOBER 085X Bull

1A 100%

DOB: 10/14/2010 Tattoo: 085 JCBB Test Tag 41 Reg. #: 1409575

RED SIX MILE AVIATOR 217P [OSF]

RED SIX MILE SAKIC 832S [MAF,OSF]

RED SIX MILE SIERA 257P [OSF]

LSF BOOKED FULL 3124N

3J MS BOOKETTE R178

3J LADY 202N

ADG	2.53 lbs	Ratio	69
WDA	2.91 lbs	Ratio	98
Test Index	84	Frame	6.5
REA	MARB	BFAT	
14.9	3.46	.24	

BW 80 lbs./BR 96; WW 730 lbs./WR 100; YW 1101 lbs./YR 100

CED	BW	WW	YW	MILK	TM	ME	HPG	CEM	STAY	MARB	YG	CW	REA	FAT
2	0.3	37	64	22	41	2	12	7	9	-0.31	0.00	39	-0.05	-0.01

- Dark red, attractive bull from the Fall Division
- Larger framed bull offering lots of growth potential in his progeny
- Exceptional EPD set across the board; dam has a 101.3 MPPA

Lot 12 JCBB ROOT BERRY 081X ET Bull

1A 100%

DOB: 10/06/2010 Tattoo: 081 JCBB Test Tag 39 Reg. #: 1422494

RED COMPASS MULBERRY 449M

RED FINE LINE MULBERRY 26P [AMF,MAF,OSF]

RED DUS FAYETTE 8G

LMAN KING ROB 8621 [MAF,OSF]

OLC BITTERROOT J187 [OSF]

DOUBLE FORK 059B

ADG	2.97 lbs	Ratio	81
WDA	2.88 lbs	Ratio	97
Test Index	89	Frame	6.6
REA	MARB	BFAT	
15.6	3.17	.21	

BW 74 lbs./BR ; WW 646 lbs./WR ; YW 1044 lbs./YR

CED	BW	WW	YW	MILK	TM	ME	HPG	CEM	STAY	MARB	YG	CW	REA	FAT
-1	1.1	39	85	15	35	8	9	4	8	-0.03	53	0.04	0.14	0.01

- A long bodied, angular bull with a larger 6.6 Frame Score
- Sire is the immortal Mulberry 26P, sire of high sellers across North America
- High scan data with exceptional EPDs make this a top prospect of the offering



JCBB Root Berry 081X ET • Lot 12

Lot 13 1051 MBR Bull

1A 100%

DOB: 10/30/2010 Tattoo: 1051 MBR Test Tag 59 Reg. #: 1422844

5L DESTINATION 893-6215 [AMF,NHF,OSF]

MBR 3K ARRIVAL 73ET [AMF,OSF]

BROWN-CBAR MS ABIGRACE P7947 [OSF]

RBRTS PENDELTON 5030

NBAR ROSINA 838

RBRTS ROSINA 5096

BW 81 lbs./BR 100; WW 458 lbs./WR 100

ADG	3.52 lbs	Ratio	96
WDA	2.30 lbs	Ratio	78
Test Index	87	Frame	4.3
REA	MARB	BFAT	
12.6	4.82	.19	

CED	BW	WW	YW	MILK	TM	ME	HPG	CEM	STAY	MARB	YG	CW	REA	FAT
3	3.5	33	57	12	29	3	13	5	11	0.10	-0.07	40	0.16	-0.01

- Moderate framed bull offering high efficiency with economical traits
- High marbling score offers progeny with super IMF potential
- Sire is a super Destination son

Lot 15 MBR 1061 Bull

1A 100%

DOB: 12/26/2010 Tattoo: 1061 MBR Test Tag 64 Reg. #: 1424689

BECKTON LANCER F442 T [MAF,OSF]

BROWN-CH EMINENCE S3535

CEDAR HILL 39N

BJR HEARTLAND 028

DJH TAFFY 339

OHRH 702 TIFFANY 1K [AMF,OSF]

BW 61 lbs./BR 84; WW 624 lbs./WR 120

ADG	4.37 lbs	Ratio	119
WDA	3.09 lbs	Ratio	105
Test Index	112	Frame	5.6
REA	MARB	BFAT	
12.3	4.27	.23	

CED	BW	WW	YW	MILK	TM	ME	HPG	CEM	STAY	MARB	YG	CW	REA	FAT
5	1.0	47	83	15	39	9	6	2	11	0.24	0.03	51	0.08	0.00

- A top bull from the Intermediate Division with a 112 overall Test Index
- Dam is a top producing cow for Morris-Box Ranch with a whopping 108.5 MPPA
- Exceptional EPDs across the board and an exceptional bull in this year's offering

Lot 14 WW PURE PRIDE 01128 [OSF] Bull

1A 100%

DOB: 11/28/2010 Tattoo: 01128 WW Test Tag 92 Reg. #: 1458330

PERKS PURE GOLD 416R

WW PURE PRIDE 725

WRAF CHEROKEE PRIDE

LONK CANYON REB K030 [OSC]

LONK FIREFLY M287 [OSC]

DFR MISS BG 005J

BW 70 lbs./BR 100; WW 638 lbs./WR 100

ADG	4.06 lbs	Ratio	111
WDA	3.06 lbs	Ratio	103
Test Index	107	Frame	6.1
REA	MARB	BFAT	
15.0	4.04	.42	

CED	BW	WW	YW	MILK	TM	ME	HPG	CEM	STAY	MARB	YG	CW	REA	FAT
	0.7	30	51	20	35				9	0.14	-0.02	33	0.01	0.00

- A very deep chested bull with super growth (4.06 lb ADG) and high WDA
- Top bull from the Intermediate Division within the Red Alliance Test
- Super scan data with big REA and high marbling

Lot 16 JCBB MILO 08X Bull

1B 95.4%

DOB: 12/28/2010 Tattoo: 008 JCBB Test Tag 38 Reg. #: 1409580

RED SIX MILE AVIATOR 217P [OSF]

RED SIX MILE SAKIC 832S [MAF,OSF]

RED SIX MILE SIERA 257P [OSF]

3J HUSTLER R466

JCBB 729 [OSF]

OLC THOMPSON K21

BW 74 lbs./BR 100; WW 707 lbs./WR 100

ADG	3.14 lbs	Ratio	86
WDA	3.03 lbs	Ratio	102
Test Index	94	Frame	5.4
REA	MARB	BFAT	
14.2	3.86	.36	

CED	BW	WW	YW	MILK	TM	ME	HPG	CEM	STAY	MARB	YG	CW	REA	FAT
3	-0.2	35	59	21	38	-0	12	10	6	-0.24	0.01	35	-0.14	-0.01

- Moderate framed, stout made bull with lots of thickness and muscle design
- Moderate birth weight and negative BW EPD offers exceptional value for use on heifers
- Sakic son with a Canadian twist and outcross opportunity to past Red Alliance bloodlines



JCBB Milo 08X • Lot 16

Lot 17 1063 MBR [OSF]

Bull

1A 100%

DOB: 12/27/2010 Tattoo: 1063 MBR Test Tag 65 Reg. #: 1422843

BECKTON LANCER F442 T [MAF,OSF]

BROWN-CH EMINENCE S3535

CEDAR HILL 39N

BUF CRK ROMEO L081 [OSC,MAF]

3J MS QUEEN S45 [OSF]

BIEBER QUEEN 8950

ADG	3.82 lbs	Ratio	104
WDA	2.80 lbs	Ratio	95
Test Index	99	Frame	4.4
REA	MARB	BFAT	
13.0	3.41	.10	

BW 70 lbs./BR 98; WW 572 lbs./WR 110

CED	BW	WW	YW	MILK	TM	ME	HPG	CEM	STAY	MARB	YG	CW	REA	FAT
7	-0.5	39	71	15	35	1	7	6	11	0.13	0.01	42	0.11	0.01

- Moderate framed Eminence son from a top cow posting a 103.6 MPPA
- Low birth weight and negative BW EPD make him a top prospect for heifer usage
- Dam is a top producer for Morris-Box with a 103.6 MPPA

Lot 19 JCBB MR TWIN PACK 04X

Bull

1A 100%

DOB: 12/24/2010 Tattoo: 004 JCBB Test Tag 37 Reg. #: 1409582

MESSMER JOSHUA 019P [OSF]

MESSMER PACKER S008 [MAF,OSF]

MESSMER MILLIE 124P [OSF]

WD50 CHEROKEE LAKOTA 60P

MBR 7026

MBR N1 RED GOLD

ADG	3.19 lbs	Ratio	87
WDA	2.72 lbs	Ratio	92
Test Index	90	Frame	4.6
REA	MARB	BFAT	
14.1	3.82	.11	

BW 66 lbs./BR ; WW 536 lbs./WR

CED	BW	WW	YW	MILK	TM	ME	HPG	CEM	STAY	MARB	YG	CW	REA	FAT
4	-1.5	40	73	12	32	-0	13	2	13	0.12	-0.13	42	0.37	-0.01

- Calving ease bull with a 66 lb birth weight and negative 1.5 BW EPD
- Messmer Packer has sired many top selling sons and daughters across the country
- Solid carcass stats offer great progeny opportunities

Lot 21 1058 MBR

Bull

1A 100%

DOB: 12/10/2010 Tattoo: 1058 MBR Test Tag 62 Reg. #: 1422841

BECKTON LANCER F442 T [MAF,OSF]

BROWN-CH EMINENCE S3535

CEDAR HILL 39N

LCC MAJOR LEAGUE A502M [MAF,OSF]

MBR MISS MAJOR BEE R15

NBAR TIDY BEE K122

ADG	3.61 lbs	Ratio	99
WDA	2.33 lbs	Ratio	79
Test Index	89	Frame	4.2
REA	MARB	BFAT	
12.3	3.81	.12	

BW 83 lbs./BR 115; WW 607 lbs./WR 100

CED	BW	WW	YW	MILK	TM	ME	HPG	CEM	STAY	MARB	YG	CW	REA	FAT
3	-0.2	36	59	10	29	1	7	1	16	0.14	-0.09	35	0.10	-0.02

- High powered pedigree combining Eminence and Major League daughter
- Last age advantage bull of the offering with a 607 lb weaning weight
- Dam stems from the Tidy Bee cow family that produced the legend -- JR 107

Lot 18 MBR 1056

Bull

1A 100%

DOB: 12/10/2010 Tattoo: 1056 MBR Test Tag 61 Reg. #: 1422472

BECKTON LANCER F442 T [MAF,OSF]

BROWN-CH EMINENCE S3535

CEDAR HILL 39N

LJC MISSION STATEMENT P27 [MAF,OSF]

MBR VALIS MISSION 8102

BJR VAL 041-7106

ADG	3.45 lbs	Ratio	94
WDA	2.61 lbs	Ratio	88
Test Index	91	Frame	5.2
REA	MARB	BFAT	
12.9	4.04	.17	

BW 83 lbs./BR 100; WW 592 lbs./WR 100

CED	BW	WW	YW	MILK	TM	ME	HPG	CEM	STAY	MARB	YG	CW	REA	FAT
4	1.1	43	77	6	28	2	9	2	14	0.20	-0.10	48	0.36	-0.01

- Another Intermediate Division bull with age advantage to cover more cows
- Great bloodline combination with Eminence on a Mission Statement cow
- High growth EPDs with high marbling and strong REA measurements

Lot 20 1059 MBR

Bull

1A 100%

DOB: 12/20/2010 Tattoo: 1059 MBR Test Tag 63 Reg. #: 1422850

BECKTON LANCER F442 T [MAF,OSF]

BROWN-CH EMINENCE S3535

CEDAR HILL 39N

LODI PRINCE 2632 [MAF,OSF]

MBR P11 REBA

FISCHERS REBA 512

ADG	4.15 lbs	Ratio	113
WDA	2.72 lbs	Ratio	92
Test Index	103	Frame	4.8
REA	MARB	BFAT	
13.3	5.38	.09	

BW 89 lbs./BR 123; WW 606 lbs./WR 99

CED	BW	WW	YW	MILK	TM	ME	HPG	CEM	STAY	MARB	YG	CW	REA	FAT
2	-0.6	27	48	9	22	0	7	2	15	0.05	-0.06	28	0.07	0.00

- One of the last age advantage bulls from the Intermediate Division
- Added age offers better cow coverage and tighter calving season
- Another top son of the high carcass value bull --Brown-CH Eminence

Lot 22 BAR G PACKER Y104

Bull

1A 100%

DOB: 01/28/2011 Tattoo: Y104 B5G Test Tag 27 Reg. #: 1428551

MESSMER JOSHUA 019P [OSF]

MESSMER PACKER S008 [MAF,OSF]

MESSMER MILLIE 124P [OSF]

LCC NEW CHAPTER A705L [OSF]

LSF DELLA K1431 N3104

LSF DELLA D109 K1431

ADG	4.13 lbs	Ratio	113
WDA	3.54 lbs	Ratio	120
Test Index	116	Frame	5.8
REA	MARB	BFAT	
15.0	4.83	.31	

BW 89 lbs./BR 103; WW 752 lbs./WR 107

CED	BW	WW	YW	MILK	TM	ME	HPG	CEM	STAY	MARB	YG	CW	REA	FAT
3	0.5	48	85	16	40	5	15	-1	14	0.33	-0.02	52	0.32	0.01

- Phenomenal stud bull prospect with great muscle expression
- Universal sized with a 5.8 Frame, right on target for today's industry
- Packer son from a top Della cow posting a 101.6 MPPA



Bar G Packer Y104 • Lot 22

Lot 23 3J ETHAN Y15

Bull

1A 100%

DOB: 02/08/2011 Tattoo: Y153JF Test Tag 5 Reg. #: 1469159

PERKS ADVANCE 121R [OSF]

COLEY'S MOJITO 503R [OSF]

NER COPPER QUEEN 2657 [OSF]

0102 JAN MILLER CHIEF [OSF]

3JF P53

LAE PAULA 1146 1535

BW 89 lbs./BR 105; WW 679 lbs./WR 98

CED	BW	WW	YW	MILK	TM	ME	HPG	CEM	STAY	MARB	YG	CW	REA	FAT
	3.4	37	72	19	38	-1	9		7	-0.07	0.04	51	0.08	0.01

ADG	4.33 lbs	Ratio	118
WDA	3.51 lbs	Ratio	119
Test Index	119	Frame	6.4
REA	MARB	BFAT	
12.3	4.69	.30	

- Straight topped bull with lots of length and a 119 Test Index !
- Sire is the NWSS Mile High Classic record-setting bull at \$77,500
- Loaded with growth performance, here is another herd bull prospect



3J Ethan Y15 • Lot 23

Lot 24 BAR G SAKIC Y130

Bull

1A 100%

DOB: 01/12/2011 Tattoo: Y130 B5G Test Tag 28 Reg. #: 1428565

RED SIX MILE AVIATOR 217P [OSF]

RED SIX MILE SAKIC 832S [MAF,OSF]

RED SIX MILE SIERA 257P [OSF]

BJR MONU 4X-303 [MAF,OSF]

BROWN MS MONU P7931 [OSF]

RABS MS VICILA H7552

BW 81 lbs./BR ; WW 642 lbs./WR

CED	BW	WW	YW	MILK	TM	ME	HPG	CEM	STAY	MARB	YG	CW	REA	FAT
4	-0.5	40	69	17	37	1	11	8	13	-0.33	-0.04	41	-0.01	-0.02

ADG	3.58 lbs	Ratio	98
WDA	3.21 lbs	Ratio	109
Test Index	103	Frame	5.8
REA	MARB	BFAT	
12.9	3.88	.22	

- A well designed, deep chested Six Mile Sakic son
- Right on target 5.8 Frame with a 3.21 WDA and 109 ratio
- A solid bull from one of the top Red Alliance producers



Bar G Sakic Y130 • Lot 24

Lot 25 BAYBLADE

Bull

1A 100%

DOB: 03/01/2011 Tattoo: 131 RETW Test Tag 73 Reg. #: 1467760

GEFB BEEFMAKER 2101

PIE BEEFMAKER 436

PIE DEEP EXPO 2057

GLACIER CHATEAU 744 [OSF]

ROLL BEE

FFR 4 TIMES SUNSHINE

BW 91 lbs./BR 116; WW 561 lbs./WR 87

CED	BW	WW	YW	MILK	TM	ME	HPG	CEM	STAY	MARB	YG	CW	REA	FAT
	2.9	27	55	19	33	3	11		6	-0.14	0.10	42	0.01	0.03

ADG	3.96 lbs	Ratio	108
WDA	3.19 lbs	Ratio	108
Test Index	108	Frame	5.2
REA	MARB	BFAT	
15.2	3.51	.18	

- Moderate, deep flanked bull with loads of thickness and muscle shape
- Exceptional scan data with big REA, high IMF and low backfat
- Unique pedigree combining Beefmaker with a Chateau daughter



Bayblade • Lot 25



Chisel • Lot 26

Lot 26 CHISEL

Bull

1A 100%

DOB: 02/26/2011 Tattoo: 1226 RETW Test Tag 79 Reg. #: 1467758

GEFB BEEFMAKER 2101

PIE BEEFMAKER 436

PIE DEEP EXPO 2057

WRAF COMANCHERO

RETW MISTY TOPP

MIST

ADG	4.07 lbs	Ratio	111
WDA	3.52 lbs	Ratio	119
Test Index	115	Frame	6.6
REA	MARB	BFAT	
12.4	3.47	.16	

BW 81 lbs./BR 102; WW 797 lbs./WR 124

CED	BW	WW	YW	MILK	TM	ME	HPG	CEM	STAY	MARB	YG	CW	REA	FAT
	2.4	44	77	15	37	7			7	-0.16	0.08	38	0.00	0.03

- A solid bull with great balance and paternal brother to Lot 25
- Dam is a top Wickman cow posting a 104.5 MPPA
- One of the top indexing bulls with a WDA of 3.52 lbs and ratio 119



RJD Major Stout 7Y • Lot 27

Lot 27 RJD MAJOR STOUT 7Y

Bull

1A 100%

DOB: 02/18/2011 Tattoo: 7Y RJD Test Tag 81 Reg. #: 1453292

RED FINE LINE MULBERRY 26P [AMF,MAF,OSF]

WW BERRY STOUT 8105 [OSF]

WRAF ALOTTA CHERABELLE

LCC MAJOR LEAGUE A502M [MAF,OSF]

WW QUEEN 7914E

OLC QUEEN L400 [OSF]

ADG	4.18 lbs	Ratio	114
WDA	3.43 lbs	Ratio	116
Test Index	115	Frame	5.8
REA	MARB	BFAT	
13.9	3.69	.23	

BW 71 lbs./BR 99; WW 743 lbs./WR 110

CED	BW	WW	YW	MILK	TM	ME	HPG	CEM	STAY	MARB	YG	CW	REA	FAT
	1.0	50	87	19	44				10	-0.04	-0.01	47	0.14	0.00

- Thick and stout made bull with excellent test gains and stats
- Solid pedigree combining Mulberry and Major League
- Dam is an outstanding 104.0 MPPA cow



WW Ace of Spades 1110 • Lot 28

Lot 28 WW ACE OF SPADES 1110

Bull

2 100%

DOB: 01/10/2011 Tattoo: 1110 WW Test Tag 94 Reg. #: 1458337

LSF COMBINATION A301M [MAF,OSF]

3J TRIBESMAN T141

LSF MATTIE 8021 4908 [OSF]

LEACHMAN RIGHT TIME [AMF,OSF]

RBF RITA 1RV3 6V18 RT [AMF,NHF]

RITA 6V18 OF 0M29 692

ADG	4.55 lbs	Ratio	124
WDA	3.48 lbs	Ratio	118
Test Index	121	Frame	7.1
REA	MARB	BFAT	
14.2	4.29	.21	

BW 86 lbs./BR 102; WW 651 lbs./WR 113

CED	BW	WW	YW	MILK	TM	ME	HPG	CEM	STAY	MARB	YG	CW	REA	FAT
	1.3	42	72	9	30				7	0.16	0.07	39	0.03	0.03

- Outcross black bull with superior design and body shape
- Super performance with 4.55 lb ADG and 3.48 lb WDA -- Test Index 121
- Only black bull in the offering to show we aren't prejudiced

Lot 29 REAL CODE

Bull

1A 100%

DOB: 01/29/2011 Tattoo: 1117 4MC Test Tag 24 Reg. #: 1471115

VGW GAME PLAN 508 [AMF,MAF,OSF]

PIE CODE RED 9058 [OSF]

PIE STORMY 541

HXC HEADLINER 6601S [MAF,OSF]

PIE LASA 9141

PIE LASA 6088

ADG 3.94 lbs	Ratio 108
WDA 2.86 lbs	Ratio 97
Test Index 102 Frame 4.3	
REA	MARB
12.9	3.98
BFAT	.31

BW 70 lbs./BR 97; WW 530 lbs./WR 105

CED	BW	WW	YW	MILK	TM	ME	HPG	CEM	STAY	MARB	YG	CW	REA	FAT
	-1.1	43	80	15	36		10		11	0.15	0.03	48	0.07	0.00

- Very moderate and high efficient son of Code Red
- His dam is a top producer with a 102.4 MPPA
- Solid performer with a 3.94 lb ADG to ratio 108

Lot 30 3J BOWFLEX Y4

Bull

1A 100%

DOB: 02/21/2011 Tattoo: Y4 3JF Test Tag 4 Reg. #: 1469154

BADLANDS ALL BEEF 114J [MAF,OSF]

BADLANDSPFFRBEEFMAKER638 [OSF]

PFFR CEDAR 3006 [OSF]

LCHMN GRANDCANYON 1244G [OSC,MAF]

MISS RAINBOW CANYON 304 [OSF]

PIE MISS IOWA 8162

ADG 3.39 lbs	Ratio 93
WDA 3.11 lbs	Ratio 105
Test Index 99 Frame 5.6	
REA	MARB
11.6	3.91
BFAT	.21

BW 85 lbs./BR 100; WW 683 lbs./WR 99; YW lbs./YR

CED	BW	WW	YW	MILK	TM	ME	HPG	CEM	STAY	MARB	YG	CW	REA	FAT
	1.6	38	73	20	39	9	11		5	0.06	0.02	50	0.19	0.02

- A bull from the famed "Rainbow" cow at 3J Farms touting a 107.8 MPPA
- Maternal brothers in previous Red Alliance Tests have been top performers and sellers
- Solid performance with a 3.11 lb WDA and a 105 ratio

Lot 31 3J GABRIEL Y150

Bull

1A 100%

DOB: 02/26/2011 Tattoo: Y150 3JF Test Tag 11 Reg. #: 1469153

BADLANDS ALL BEEF 114J [MAF,OSF]

BADLANDSPFFRBEEFMAKER638 [OSF]

PFFR CEDAR 3006 [OSF]

LCC ALL GOOD 1548K

PELTON MISS DORA 5220M

PELTONS MISS RAM

ADG 3.38 lbs	Ratio 92
WDA 3.32 lbs	Ratio 112
Test Index 102 Frame 7.4	
REA	MARB
12.3	3.79
BFAT	.17

BW 88 lbs./BR 104; WW 736 lbs./WR 107

CED	BW	WW	YW	MILK	TM	ME	HPG	CEM	STAY	MARB	YG	CW	REA	FAT
	2.6	48	82	13	37		10		8	0.08	-0.09	45	0.40	0.01

- Power and growth with plenty of frame
- Outstanding growth with 3.38 ADG and 3.32 WDA – Just think of what his result would have been on a souped up grain ration
- Top 7% for WW, 11% YW, 6% for REA

Lot 32 BAR G FULL THROTTLE Y319

Bull

1A 100%

DOB: 02/12/2011 Tattoo: Y319 B5G Test Tag 30 Reg. #: 1428561

RD TER-RON FULLY LOADED 540R [AMF,OSF]

RED 6 MILE FULL THROTTLE171T [MAF,OSF]

RED SIX MILE WITZEL 360J [OSF]

BJR MONU 4X-303 [MAF,OSF]

BROWN MS MONU P7931 [OSF]

RABS MS VICILA H7552

ADG 3.87 lbs	Ratio 106
WDA 3.03 lbs	Ratio 103
Test Index 104 Frame 5.2	
REA	MARB
12.6	4.16
BFAT	.25

BW 79 lbs./BR ; WW 634 lbs./WR

CED	BW	WW	YW	MILK	TM	ME	HPG	CEM	STAY	MARB	YG	CW	REA	FAT
	3	0.2	39	75	15	34	2	8	3	13	-0.06	0.01	45	-0.01

- Full brother to lot 33 – get a double dose of Full Throttle and buy both
- Moderate BW, moderate frame
- High growth with 3.87 ADG, plus 3 WDA with carcass to boot – 4.2 MARB

Lot 33 BAR G FULL THROTTLE Y656

Bull

1A 100%

DOB: 01/01/2011 Tattoo: Y656 B5G Test Tag 32 Reg. #: 1428559

RD TER-RON FULLY LOADED 540R [AMF,OSF]

RED 6 MILE FULL THROTTLE171T [MAF,OSF]

RED SIX MILE WITZEL 360J [OSF]

BJR MONU 4X-303 [MAF,OSF]

BROWN MS MONU P7931 [OSF]

RABS MS VICILA H7552

ADG 3.71 lbs	Ratio 101
WDA 3.11 lbs	Ratio 105
Test Index 103 Frame 5.5	
REA	MARB
13.0	3.80
BFAT	.36

BW 81 lbs./BR ; WW 651 lbs./WR

CED	BW	WW	YW	MILK	TM	ME	HPG	CEM	STAY	MARB	YG	CW	REA	FAT
	3	0.2	39	75	15	34	2	8	3	13	-0.06	0.01	45	-0.01

- Full brother to lot 32 – buy them both for a uniform calf crop
- Great growth performance on test
- Backed by a really good donor cow – See the females and embryos offered later in this sale



Bar G Full Throttle Y656 • Lot 33

Lot 34 JCBB MAKIN PAY 114Y Bull

1A 100%

DOB: 01/27/2011 Tattoo: 114 JCBB Test Tag 43 Reg. #: 1409590

BIEBER MAKE MIMI 7249 [MAF,OSF]
BIEBER MAKIN HAY 9913 [MAF,OSF]
 BIEBER ADELLE 8958 [OSF]

BUF CRK ROMEO L081 [OSC,MAF]
DJH HANNAHBELL 306 [AMF,OSF]
 BAR S CHERABELL 6129 [AMF,OSF]

BW 75 lbs./BR 100; WW 633 lbs./WR 100

ADG	3.19 lbs	Ratio	87
WDA	2.99 lbs	Ratio	101
Test Index 94 Frame 5.8			
REA	MARB	BFAT	
14.0	4.70	.23	

CED	BW	WW	YW	MILK	TM	ME	HPG	CEM	STAY	MARB	YG	CW	REA	FAT
6	0.0	45	89	13	36	11	7	4	6	0.04	-0.01	54	0.08	-0.02

- Calving ease bull that we wish we had more to offer yet high growth
- Moderate frame, EPD's in top 11% for WW and 5% YW
- Great carcass results with 4.7 MARB and 13.9 REA scan

Lot 35 TEX STAR Bull

1A 100%

DOB: 01/04/2011 Tattoo: 114 RETW Test Tag 70 Reg. #: 1467767

GEFB BEEFMAKER 2101
PIE BEEFMAKER 436
 PIE DEEP EXPO 2057

BIEBER TOP ARROW 7793
RETW III ION
 HEATHER ANNE 898

BW 81 lbs./BR 105; WW 648 lbs./WR 108

ADG	3.93 lbs	Ratio	107
WDA	2.93 lbs	Ratio	99
Test Index 103 Frame 5.5			
REA	MARB	BFAT	
12.2	3.40	.17	

CED	BW	WW	YW	MILK	TM	ME	HPG	CEM	STAY	MARB	YG	CW	REA	FAT
	2.1	38	67	20	39	6			6	-0.12	0.09	38	-0.04	0.03

- Think about keeping daughters as replacements out of this one. Top 19% for TM
- Both top and bottom sides of pedigree produces great females.
- 103 test index and 3.9 ADG on a moderate frame

Lot 36 AVERY Bull

1A 100%

DOB: 02/25/2011 Tattoo: 1225 RETW Test Tag 78 Reg. #: 1467764

GEFB BEEFMAKER 2101
PIE BEEFMAKER 436
 PIE DEEP EXPO 2057

FFR 4TMS GOLD ROBBER
4 TMS GOLDEN GLOW
 FFR FIRE STAR

BW 80 lbs./BR 100; WW 750 lbs./WR 116

ADG	3.69 lbs	Ratio	101
WDA	3.20 lbs	Ratio	108
Test Index 104 Frame 4.6			
REA	MARB	BFAT	
12.7	3.81	.35	

CED	BW	WW	YW	MILK	TM	ME	HPG	CEM	STAY	MARB	YG	CW	REA	FAT
	1.8	36	67	16	33	1			5	-0.15	0.08	34	0.08	0.03

- 104 test index result with 3.7 ADG and 3.20 WDA on roughage ration!
- Moderate frame to keep those feed costs down

Lot 37 GILCHRIST TOMBSTONE Y103 Bull

1A 100%

DOB: 02/05/2011 Tattoo: Y103 STRG Test Tag 83 Reg. #: 1428746

BIEBER MAKE MIMI 7249 [MAF,OSF]
BIEBER MAKIN HAY 9913 [MAF,OSF]
 BIEBER ADELLE 8958 [OSF]

PIE GET R DONE 684 [MAF,OSF]
HHFF-ATKN TIDY BEE 2066-914X
 SRN TIDY BEE 2066 [AMF,OSF]

BW 79 lbs./BR 95; WW 714 lbs./WR 92

ADG	3.30 lbs	Ratio	90
WDA	3.04 lbs	Ratio	103
Test Index 97 Frame 5.6			
REA	MARB	BFAT	
11.5	3.84	.09	

CED	BW	WW	YW	MILK	TM	ME	HPG	CEM	STAY	MARB	YG	CW	REA	FAT
10	-0.3	48	90	15	39	8	8	5	9	-0.04	-0.03	54	0.23	-0.01

- Great cow family with Tidy Bee represented on bottom side of pedigree
- Moderate frame package
- EPD's in top percentiles – 7% WW, 4% YW, 20% for REA

Lot 38 WW COMBINED SOLUTION 1117 Bull

1A 100%

DOB: 01/17/2011 Tattoo: 1117 WW Test Tag 90 Reg. #: 1458333

LSF COMBINATION A301M [MAF,OSF]
3J TRIBESMAN T141
 LSF MATTIE 8021 4908 [OSF]

LCC CHEYENNE B221L [MAF,OSF]
RRSH CANDY
 O&R'S MONU BLOXY [OSF]

BW 84 lbs./BR 101; WW 550 lbs./WR 96

ADG	3.17 lbs	Ratio	87
WDA	2.75 lbs	Ratio	93
Test Index 90 Frame 6.8			
REA	MARB	BFAT	
11.9	4.09	.19	

CED	BW	WW	YW	MILK	TM	ME	HPG	CEM	STAY	MARB	YG	CW	REA	FAT
	1.0	49	87	9	34				11	0.26	0.10	56	0.10	0.03

- Very solid blood lines with Bloxy cow family on bottom side of pedigree
- 4.0 MARB score matches will with 0.26 EPD
- Top 6% for WW, 7% YW and 14% MARB

Lot 39 BULK LEADER Bull

1A 100%

DOB: 02/24/2011 Tattoo: 1224 RETW Test Tag 77 Reg. #: 1467766

GEFB BEEFMAKER 2101
PIE BEEFMAKER 436
 PIE DEEP EXPO 2057

PANHANDLE PRINCE 0124
3JF N52
 3J LADY 215

BW 76 lbs./BR 95; WW 675 lbs./WR 105

ADG	4.02 lbs	Ratio	110
WDA	3.12 lbs	Ratio	105
Test Index 108 Frame 6.8			
REA	MARB	BFAT	
11.7	3.81	.22	

CED	BW	WW	YW	MILK	TM	ME	HPG	CEM	STAY	MARB	YG	CW	REA	FAT
	0.8	27	52	11	24	6			5	-0.17	0.04	27	-0.07	0.02

- Power and growth type of bull
- Large frame, plus 4 ADG and 3.12 WDA achieved without being over dosed on grain
- 108 Test index

Lot 40 MBR 1126

Bull

1A 100%

DOB: 01/18/2011 Tattoo: 1126 MBR Test Tag 67 Reg. #: 1424693

5L DESTINATION 893-6215 [AMF,NHF,OSF]

MBR 3K ARRIVAL 73ET [AMF,OSF]

BROWN-CBAR MS ABIGRACE P7947 [OSF]

GILCHRIST UPTREND N304

3J MS UPTREND S186

3J LADY 211N

BW 79 lbs./BR 100; WW 635 lbs./WR 100

ADG **3.67** lbs Ratio **100**
 WDA **2.93** lbs Ratio **99**
 Test Index **100** Frame **5.4**
 REA MARB BFAT
13.9 3.97 .21

CED	BW	WW	YW	MILK	TM	ME	HPG	CEM	STAY	MARB	YG	CW	REA	FAT
3	2.2	40	71	18	38	5	13	3	13	0.13	-0.02	46	0.17	0.00

- Moderate frame with fantastic growth on roughage ration at 3.67 lbs.
- Keep this bulls daughters as replacements – top 7% for HPG, 19% for Stayability and 23% for TM

Lot 41 3J LIAM Y525

Bull

1A 100%

DOB: 02/24/2011 Tattoo: Y525 3JF Test Tag 20 Reg. #: 1469148

BADLANDS ALL BEEF 114J [MAF,OSF]

BADLANDSPFFRBEEFMAKER638 [OSF]

PFFR CEDAR 3006 [OSF]

7U REPLAY 8918

PANHANDLE REPLICA 428

7U PEBBLES 0285

BW 81 lbs./BR 95; WW 696 lbs./WR 101

ADG **3.71** lbs Ratio **101**
 WDA **3.20** lbs Ratio **108**
 Test Index **105** Frame **7.1**
 REA MARB BFAT
12.2 3.34 .18

CED	BW	WW	YW	MILK	TM	ME	HPG	CEM	STAY	MARB	YG	CW	REA	FAT
	2.1	49	86	10	34	7	12		8	0.16	-0.04	51	0.20	-0.01

- Large frame rascal with a 105 test index result
- Power and growth type of bull
- 3.71 ADG, 3.20 WDA and top 6% in breed for WW and 8% for YW

Lot 42 HL EPIC'S ENERGIZER 404Y

Bull

1A 100%

DOB: 02/19/2011 Tattoo: 404Y 44HL Test Tag 22 Reg. #: 1422347

BECKTON EPIC K F075

BECKTON EPIC R397 K [OSF]

BECKTON KIT F468 JL

DJH CRIMSON CANYON 404

DJH TOOTSIE 637

DJH REBELLA GOLD 473 [AMF,OSF]

BW 85 lbs./BR 107; WW 692 lbs./WR 102

ADG **3.91** lbs Ratio **107**
 WDA **3.19** lbs Ratio **108**
 Test Index **107** Frame **4.8**
 REA MARB BFAT
15.1 3.73 .26

CED	BW	WW	YW	MILK	TM	ME	HPG	CEM	STAY	MARB	YG	CW	REA	FAT
4	2.3	45	86	18	40	2	13	7	12	0.13	0.13	56	0.21	0.05

- Pay close attention to this one! 107 test index
- 3.91 ADG, plus 3 WDA on a moderate frame with 15.4 REA scan!
- EPD's in top 12% for WW, 7% YW, 14% TM and 6% HPG

Lot 43 3J NOAH Y119

Bull

1A 100%

DOB: 02/24/2011 Tattoo: Y119 3JF Test Tag 9 Reg. #: 1469151

OHRR 9502 MR ROBUST 18N

OHRR-K-RA 9J ROBO GOLD 10R

OHRR 388 GOLD PENNY 9J

RED NORTHLINE ROB ROY 122K [MAF,OSF]

3J MS ROBBISON U119

PIE MAGGIE 653

BW 82 lbs./BR 100; WW 733 lbs./WR 100

ADG **3.56** lbs Ratio **97**
 WDA **3.04** lbs Ratio **103**
 Test Index **100** Frame **5.6**
 REA MARB BFAT
14.4 4.47 .23

CED	BW	WW	YW	MILK	TM	ME	HPG	CEM	STAY	MARB	YG	CW	REA	FAT
	1.3	30	63	20	35	7			8	0.02	40	0.04	-0.14	-0.01

- Fresh genetics on a moderate frame
- Right on target for gain with a high roughage ration!
- Great carcass results with 14.7 REA and 4.6 MARB

Lot 44 3J ELIJAH Y162

Bull

1A 100%

DOB: 02/05/2011 Tattoo: Y162 3JF Test Tag 12 Reg. #: 1469155

BJR HIGH CAPACITY 008 [MAF,OSF]

UBAR HIGH CAPACITY 224 [OSF]

BJR BONNEBELL 7G

LCC NEW CHAPTER A705L [OSF]

LSF MATTIE 8021 4908 [OSF]

DGR MATTIE 8021

BW 77 lbs./BR ; WW 647 lbs./WR

ADG **3.43** lbs Ratio **94**
 WDA **2.99** lbs Ratio **101**
 Test Index **97** Frame **5.4**
 REA MARB BFAT
12.6 3.83 .23

CED	BW	WW	YW	MILK	TM	ME	HPG	CEM	STAY	MARB	YG	CW	REA	FAT
	1.6	56	98	21	49	10	12		10	0.01	0.05	61	0.30	0.02

- Very exciting lot that would work in every pasture
- Great bloodlines top and bottom, moderate birth weight
- EPD's in top 1% for WW, 2% YW and 1% for TM



3J Elijah Y162 • Lot 44

Lot 45 1123 MBR

Bull

1A 100%

DOB: 01/05/2011 Tattoo: 1123 MBR Test Tag 66 Reg. #: 1422849

BECKTON LANCER F442 T [MAF,OSF]

BROWN-CH EMINENCE S3535

CEDAR HILL 39N

OLC DAYMAKER J284

MBR N11 BERRY J284

NBAR BERRY 916

BW 71 lbs./BR 98; WW 630 lbs./WR 103

ADG 3.61 lbs	Ratio 99	
WDA 2.62 lbs	Ratio 88	
Test Index 94	Frame 4.2	
REA	MARB	BFAT
12.6	3.95	.13

CED	BW	WW	YW	MILK	TM	ME	HPG	CEM	STAY	MARB	YG	CW	REA	FAT
5	-1.2	35	61	13	30	9	7	4	12	0.26	0.00	35	0.03	0.00

- Calving ease alert! Wish we had more like this to offer
- Growth and carcass in one package with 3.61 ADG and top 14% for MARB

Lot 46 O MAN

Bull

1A 100%

DOB: 02/09/2011 Tattoo: 129 RETW Test Tag 72 Reg. #: 1467763

RED BRYLOR NEW TREND 22 [MAF,OSF]

DJH RED TREND 572

BJR MELODY 002-Y715

RED DMM BRYLOR THUMP 2T [OSF]

3J MS ASHLEY W111

MISS RAINBOW CANYON 304 [OSF]

ADG 4.53 lbs	Ratio 124	
WDA 3.29 lbs	Ratio 111	
Test Index 118	Frame 6.7	
REA	MARB	BFAT
15.2	3.58	.20

CED	BW	WW	YW	MILK	TM	ME	HPG	CEM	STAY	MARB	YG	CW	REA	FAT
	1.1	31	59	22	37	6	10		8	-0.08	0.04	37	0.18	-0.01

- Very high indexing bull at 118 on test – Total package in this bull
- 4.53 ADG, 3.29 WDA, Large frame
- Top 14% for breed in Milk EPD and 15.3 REA scan!!!

Lot 47 ACCENT

Bull

1A 100%

DOB: 02/17/2011 Tattoo: 1217 RETW Test Tag 75 Reg. #: 1467765

RED BRYLOR NEW TREND 22 [MAF,OSF]

DJH RED TREND 572

BJR MELODY 002-Y715

PERKS PURE GOLD 416R

RETW GOLD ARROW

RETW MISTY TOPP

BW 74 lbs./BR 97; WW 558 lbs./WR 87

ADG 3.89 lbs	Ratio 106	
WDA 2.69 lbs	Ratio 91	
Test Index 99	Frame 4.8	
REA	MARB	BFAT
12.5	3.28	.15

CED	BW	WW	YW	MILK	TM	ME	HPG	CEM	STAY	MARB	YG	CW	REA	FAT
	-0.5	21	43	24	35	5	11		11	-0.08	0.01	36	-0.02	0.01

- Excellent calving ease bull – can't get enough of these – high demand
- Moderate frame yet had 3.89 ADG on a high roughage ration

Lot 48 WW CHAIN GANG 1124

Bull

1A 100%

DOB: 01/24/2011 Tattoo: 1124 WW Test Tag 91 Reg. #: 1458335

LSF COMBINATION A301M [MAF,OSF]

3J TRIBESMAN T141

LSF MATTIE 8021 4908 [OSF]

BASIN HOBO 215D [MAF,OSF]

AQUILA BH 4100-949

AQUILA 4100

ADG 3.83 lbs	Ratio 105	
WDA 2.66 lbs	Ratio 90	
Test Index 97	Frame 6.9	
REA	MARB	BFAT
10.3	4.12	.18

BW 82 lbs./BR 100; WW 532 lbs./WR 92

CED	BW	WW	YW	MILK	TM	ME	HPG	CEM	STAY	MARB	YG	CW	REA	FAT
	1.3	42	78	7	28				10	0.08	0.12	54	0.06	0.04

- Comes from a great cow family line
- 3.83 ADG and 105 test index on 6.9 frame
- 4.14 MARB

Lot 49 3J JACKSON Y333

Bull

1A 100%

DOB: 03/25/2011 Tattoo: Y333 3JF Test Tag 16 Reg. #: 1469156

BJR HI HO 916

BJR HIGH CAPACITY 008 [MAF,OSF]

JRA JAMES 904

LCC NEW CHAPTER A705L [OSF]

LSF MATTIE 8021 4908 [OSF]

DGR MATTIE 8021

BW 87 lbs./BR ; WW 685 lbs./WR

ADG 3.69 lbs	Ratio 101	
WDA 3.30 lbs	Ratio 111	
Test Index 106	Frame 6.0	
REA	MARB	BFAT
12.8	4.47	.26

CED	BW	WW	YW	MILK	TM	ME	HPG	CEM	STAY	MARB	YG	CW	REA	FAT
	1.7	52	91	16	42	9	14		10	0.16	-0.01	57	0.39	0.02

- Very high quality deep in the sale order! 106 test index
- 4.8 MARB with 3.69 ADG and 3.30 WDA
- Top EPD's in breed at 3% for WW, 4% YW, 8% TM, 7% REA

Lot 50 GILCHRIST SHOOTING STAR

Bull

1A 100%

DOB: 03/28/2011 Tattoo: Y115 1CLAY Test Tag 87 Reg. #: 1428741

PIE GET R DONE 684 [MAF,OSF]

ATKN HHFF WASABI

SRN TIDY BEE 2066 [AMF,OSF]

WNDW ULTRA VISION 50

WRIGHTS MYSTIC VISIONARY 148

TBS MISCHIEF 2217 [OSF]

ADG 3.87 lbs	Ratio 106	
WDA 3.35 lbs	Ratio 113	
Test Index 110	Frame 6.6	
REA	MARB	BFAT
11.4	3.74	.18

BW 69 lbs./BR 100; WW 732 lbs./WR 100

CED	BW	WW	YW	MILK	TM	ME	HPG	CEM	STAY	MARB	YG	CW	REA	FAT
	6	-0.5	34	64	18	35	4	11	5	9	0.02	-0.03	38	0.09

- Owned by youngest member of Red Alliance – Clayton Gilchrist
- Powerful 110 test index with a 3.87 ADG and 3.55 WDA
- Calving ease deluxe on a big frame at 6.6 – great combination!

Lot 51 3J JOSHUA Y172

Bull

1A 100%

DOB: 02/24/2011 Tattoo: Y172 3JF Test Tag 13 Reg. #: 1469152

COLEY'S MOJITO 503R [OSF]

3J GOOD NEWS U188

2022 JAN MILLER CHIEF [OSF]

LEACHM.KING RODGE 1270F

3J LADY 23N

LVL BOOTJACK TINY

BW 82 lbs./BR 98; WW 695 lbs./WR 101

ADG	2.86 lbs	Ratio	78
WDA	3.05 lbs	Ratio	103
Test Index	91	Frame	5.9
REA	MARB	BFAT	
12.8	4.24	.23	

CED	BW	WW	YW	MILK	TM	ME	HPG	CEM	STAY	MARB	YG	CW	REA	FAT
	-0.2	25	46	23	36				8	-0.15	-0.11	29	0.19	-0.01

- Large frame bull at 5.9
- EPD for milk is in top 9% for breed. Great for use in keeping daughters
- Plus 3 lbs. WDA and 4.4 MARB – Growth and carcass quality

Lot 52 BAR G FULL THROTTLE Y314

Bull

1A 100%

DOB: 01/26/2011 Tattoo: Y314 B5G Test Tag 29 Reg. #: 1428560

RD TER-RON FULLY LOADED 540R [AMF,OSF]

RED 6 MILE FULL THROTTLE171T [MAF,OSF]

RED SIX MILE WITZEL 360J [OSF]

BJR MONU 4X-303 [MAF,OSF]

BROWN MS MONU P7931 [OSF]

RABS MS VICILA H7552

BW 91 lbs./BR ; WW 592 lbs./WR

ADG	3.45 lbs	Ratio	94
WDA	3.03 lbs	Ratio	102
Test Index	98	Frame	5.7
REA	MARB	BFAT	
12.8	3.99	.19	

CED	BW	WW	YW	MILK	TM	ME	HPG	CEM	STAY	MARB	YG	CW	REA	FAT
3	0.2	39	75	15	34	2	8	3	13	-0.06	0.01	45	-0.01	-0.01

- Fresh genetics from Canada with Full Throttle as sire
- 3.45 ADG is right on target for gain with plus 3 lbs. WDA
- Excellent EPD's – top 28% for WW, 23% YW and 22% for Stayability

Lot 53 BAR G SAKIC Y901

Bull

1A 100%

DOB: 01/12/2011 Tattoo: Y901 5G Test Tag 33 Reg. #: 1428564

RED SIX MILE AVIATOR 217P [OSF]

RED SIX MILE SAKIC 832S [MAF,OSF]

RED SIX MILE SIERA 257P [OSF]

BJR MONU 4X-303 [MAF,OSF]

BROWN MS MONU P7931 [OSF]

RABS MS VICILA H7552

BW 86 lbs./BR ; WW 566 lbs./WR

ADG	2.64 lbs	Ratio	72
WDA	2.75 lbs	Ratio	93
Test Index	83	Frame	5.6
REA	MARB	BFAT	
11.9	3.46	.14	

CED	BW	WW	YW	MILK	TM	ME	HPG	CEM	STAY	MARB	YG	CW	REA	FAT
4	-0.5	40	69	17	37	1	11	8	13	-0.33	-0.04	41	-0.01	-0.02

- Sakic x Monu 4X 303 is a unique genetic package
- Top 26% for WW and 24% for Stayability

Lot 54 1127 MBR

Bull

1A 100%

DOB: 01/10/2011 Tattoo: 1127 MBR Test Tag 68 Reg. #: 1422842

5L DESTINATION 893-6215 [AMF,NHF,OSF]

MBR 3K ARRIVAL 73ET [AMF,OSF]

BROWN-CBAR MS ABIGRACE P7947 [OSF]

PIE DEEP CREEK 120 [MAF,OSF]

NBAR DEE R519

NBAR MISS CANOOK N369

BW 60 lbs./BR 82; WW 633 lbs./WR 104

ADG	3.61 lbs	Ratio	99
WDA	2.59 lbs	Ratio	88
Test Index	93	Frame	5.3
REA	MARB	BFAT	
11.6	4.42	.19	

CED	BW	WW	YW	MILK	TM	ME	HPG	CEM	STAY	MARB	YG	CW	REA	FAT
5	0.9	32	61	17	33	3	14	4	11	0.21	-0.10	38	0.15	-0.02

- Fantastic calving ease on a moderate 5.3 Frame
- Very solid 3.61 ADG on test
- Top 5% for HPG

Lot 55 1130 MBR

Bull

1A 100%

DOB: 01/24/2011 Tattoo: 1130 MBR Test Tag 69 Reg. #: 1422848

BECKTON LANCER F442 T [MAF,OSF]

BROWN-CH EMINENCE S3535

CEDAR HILL 39N

NEO-SHO MILLENIUM 065G [OSF]

3J MS MILLIE N102

3J LADY H70

BW 73 lbs./BR 101; WW 606 lbs./WR 100

ADG	2.84 lbs	Ratio	78
WDA	2.41 lbs	Ratio	82
Test Index	80	Frame	4.0
REA	MARB	BFAT	
10.7	4.06	.12	

CED	BW	WW	YW	MILK	TM	ME	HPG	CEM	STAY	MARB	YG	CW	REA	FAT
6	-1.0	33	62	14	30	6	10	8	13	0.12	0.02	36	-0.07	0.00

- Calving ease bull for use on those heifers you are getting ready to buy
- Smaller frame 4.0 bull for those of you who want to reduce mature cow size in your next heifer crop
- Top 7% in breed for CEM

Lot 56 RJD CHATUE BUSTER 2Y

Bull

1A 100%

DOB: 01/20/2011 Tattoo: 2Y RJD Test Tag 80 Reg. #: 1453293

OLC CHATEAU K465 [OSF]

OLC ELINE CHATO P189

OLC ECHETA L177

TED HEAVEN OR BUST 075

TED MS REBECCA

MISS TED KEYSTONE#629

BW 75 lbs./BR 101; WW 612 lbs./WR 90

ADG	2.75 lbs	Ratio	75
WDA	2.75 lbs	Ratio	93
Test Index	84	Frame	5.4
REA	MARB	BFAT	
12.2	5.18	.09	

CED	BW	WW	YW	MILK	TM	ME	HPG	CEM	STAY	MARB	YG	CW	REA	FAT
	1.5	34	63	22	39				6	-0.03	-0.01	45	0.05	-0.01

- EPD's in top 13% for Milk and top 19% for Total Maternal
- Moderate birthweight – good for use on those smaller frame cows
- Moderate 5.4 frame, whopping 5.18 MARB score

Lot 57 WW TRIBAL COUNCIL 116 Bull 1A 100%

DOB: 01/06/2011 Tattoo: 116 WW Test Tag 88 Reg. #: 1466861

LSF COMBINATION A301M [MAF,OSF]

3J TRIBESMAN T141

LSF MATTIE 8021 4908 [OSF]

BJR JR 107 [MAF,OSF]

LONK MISS JR J979 [OSF]

BTH MISS DUKE 536 [OSF]

BW 85 lbs./BR 100; WW 471 lbs./WR 100

CED	BW	WW	YW	MILK	TM	ME	HPG	CEM	STAY	MARB	YG	CW	REA	FAT
	2.2	46	78	14	37	7	12		7	0.06	0.06	50	-0.01	0.00

- 6.9 Frame
- 3.72 ADG, EPD's in top 9% of breed for WW and 17% for YW
- Out of a long time and well respected donor cow

ADG 3.72 lbs	Ratio 102	
WDA 2.60 lbs	Ratio 88	
Test Index 95	Frame 6.9	
REA	MARB	BFAT
10.7	3.85	.19

Lot 58 WW VINCENT 123 Bull 1A 100%

DOB: 02/03/2011 Tattoo: 123 WW Test Tag 89 Reg. #: 1458341

LSF COMBINATION A301M [MAF,OSF]

3J TRIBESMAN T141

LSF MATTIE 8021 4908 [OSF]

BUF CRK ROMEO L081 [OSC,MAF]

WRAP ROMEO'S GINGER

PAR GINGER 627

BW 74 lbs./BR 89; WW 570 lbs./WR 99

CED	BW	WW	YW	MILK	TM	ME	HPG	CEM	STAY	MARB	YG	CW	REA	FAT
	-1.8	35	67	14	32				8	0.20	0.09	43	-0.05	0.02

- 111 test index ranks in top 10% of this bull test
- Calving ease in performance and carcass with 14.2 REA and 4.23 MARB
- 4.18 ADG on test resulted in a 114 ratio

ADG 4.18 lbs	Ratio 114	
WDA 3.16 lbs	Ratio 107	
Test Index 111	Frame 5.3	
REA	MARB	BFAT
14.2	4.23	.23

Lot 59 BAR G PACKER Y641 Bull 1A 100%

DOB: 02/06/2011 Tattoo: Y641 B5G Test Tag 31 Reg. #: 1428548

MESSMER JOSHUA 019P [OSF]

MESSMER PACKER S008 [MAF,OSF]

MESSMER MILLIE 124P [OSF]

LCC MAJOR LEAGUE A502M [MAF,OSF]

BDEE CHERABELL 641

LONK CHERABELL N3129 [OSF]

BW 84 lbs./BR 97; WW 656 lbs./WR 93

CED	BW	WW	YW	MILK	TM	ME	HPG	CEM	STAY	MARB	YG	CW	REA	FAT
4	-1.5	42	77	15	36	2	13	2	16	0.32	0.01	44	0.27	0.03

- Calving ease genetics in a moderate frame package
- Outstanding genetics for REA and IMF carcass quality
- Out of the highly acclaimed Cherabelle cow family line

ADG 2.83 lbs	Ratio 77	
WDA 2.90 lbs	Ratio 98	
Test Index 88	Frame 4.6	
REA	MARB	BFAT
13.4	3.27	.16

Lot 60 GANG FIRE Bull 1A 100%

DOB: 02/18/2011 Tattoo: 1128 4MC Test Tag 26 Reg. #: 1471087

RED GEIS HI HO 180'04

RED SVR GANGSTER 14S [AMF,MAF,OSF]

RED DWAJO DUCHESS 75M

5L TRADITION 203-6145 [MAF,OSF]

5L FIREFLY 2436-3208

5L FIREFLY 1853-2436

BW 85 lbs./BR 106; WW 525 lbs./WR 90

CED	BW	WW	YW	MILK	TM	ME	HPG	CEM	STAY	MARB	YG	CW	REA	FAT
	1.8	28	48	6	19	2			12	0.26	-0.08	34	0.26	0.01

- Fresh genetics that our breed needs
- Moderate frame with high efficiency on feed
- 4.46 MARB score

ADG 3.63 lbs	Ratio 99	
WDA 2.84 lbs	Ratio 96	
Test Index 98	Frame 4.8	
REA	MARB	BFAT
12.2	4.56	.18

Lot 61 3J LANDON Y120 Bull 1A 100%

DOB: 02/11/2011 Tattoo: Y120 3JF Test Tag 10 Reg. #: 1469157

BJR HI HO 916

BJR HIGH CAPACITY 008 [MAF,OSF]

JRA JAMES 904

LCC NEW CHAPTER A705L [OSF]

LSF MATTIE 8021 4908 [OSF]

DGR MATTIE 8021

BW 80 lbs./BR ; WW 660 lbs./WR

CED	BW	WW	YW	MILK	TM	ME	HPG	CEM	STAY	MARB	YG	CW	REA	FAT
	1.7	52	91	16	42	9	14		10	0.16	-0.01	57	0.39	0.02

- Solid growth performance on test
- ET calf out of the great BJR High Capacity 008 x Mattie
- EPD's in the top 3% for WW, 4% for YW, 8% for TM and 6% for HPG

ADG 3.30 lbs	Ratio 90	
WDA 3.07 lbs	Ratio 104	
Test Index 97	Frame 5.4	
REA	MARB	BFAT
11.6	3.78	.21

Lot 62 VIBRANT Bull 1A 100%

DOB: 02/13/2011 Tattoo: 1213 RETW Test Tag 74 Reg. #: 1467759

GEFB BEEFMAKER 2101

PIE BEEFMAKER 436

PIE DEEP EXPO 2057

FFR 4TM SGOLD ROBBER

FFR 4 TIMES SUNSHINE

FFR HEAVENLY JUNEBUG

BW 73 lbs./BR 92; WW 554 lbs./ WR 87

CED	BW	WW	YW	MILK	TM	ME	HPG	CEM	STAY	MARB	YG	CW	REA	FAT
	-0.5	19	44	19	29	-1			5	-0.14	0.29	39	-0.17	0.03

- Moderate 4.5 Frame calving ease bull.
- Great for use on first calf heifers

ADG 2.92 lbs	Ratio 80	
WDA 2.55 lbs	Ratio 86	
Test Index 83	Frame 4.5	
REA	MARB	BFAT
10.9	4.19	.19

Lot 63 BAR G DINA Y416

Open Heifer

Reg. #: 1428549 Calved: 03/05/2011 Tattoo: Y416 B5G 1A 100.0%

LJC MISSION STATEMENT P27 TBR MISSION STATEMENT U323 BECKTON BELGA M744 EP	LJC LANCER 806 LJC HANNAH 106 BECKTON EPIC KJ J722 BECKTON BELGA F698 NP	BW 75 lbs. BR 100 WW 604 lbs. WR 100
SAM'S DIVISION 9109 SIS DINA DIVISION 7416 SIS DINA ROBIN 4106	PIE DIVISION 7104 PIE CANITA 020 LCHMN ROCKN ROBIN 1099J LCHMN DINA G1006	

CED	BW	WW	YW	MILK	TM	ME	HPG	CEM	STAY	MARB	YG	CW	REA	FAT
2	-0.1	34	68	17	34	5	10	2	11	0.02	-0.06	41	0.14	-0.01

The Weber's purchased the Dina cow from Speer and Speer Red Angus as the "pick of the heifer crop." Her heifer calves have stood out each year being moderate sized and built right. This one is no exception with depth and capacity.



Bar G Dina Y416 • Lot 63

Lot 64 BAR G VICILA Y307

Open Heifer

Reg. #: 1428550 Calved: 02/18/2011 Tattoo: Y307 B5G 1A 100.0%

LJC MISSION STATEMENT P27 TBR MISSION STATEMENT U323 BECKTON BELGA M744 EP	LJC LANCER 806 LJC HANNAH 106 BECKTON EPIC KJ J722 BECKTON BELGA F698 NP	BW 82 lbs. BR 113 WW 621 lbs. WR 105
LCC MAJOR LEAGUE A502M RICE JULIANS GIRL 307 RICE L93	BFCK CHEROKEE CNYN 4912 KRN REBA'S ROBIN LCHMN EBV 1752H RABS MS VICILA H7555	

CED	BW	WW	YW	MILK	TM	ME	HPG	CEM	STAY	MARB	YG	CW	REA	FAT
1	1.3	45	83	15	38	5	10	0	15	-0.01	-0.07	52	0.39	0.00

This heifer originates from the Vicila cow family bred for generations by the RA Brown Ranch. Her dam has consistently produced a top heifer calf each year and 2011 was no different. X307 is moderate sized with good depth of rib and a stylish look.



Bar G Vicila Y307 • Lot 64

Lot 65 BAR G LANA Y482

Open Heifer

Reg. #: 1428552 Calved: 01/05/2011 Tattoo: Y482 B5G 1A 100.0%

NEO-SHO DIRECT TICKET M517 BDEE DIRECT TICKET 7077 LSF EVERGREEN LA362 N3041	BIEBER MAKE MIMI 7249 MS NSF PROOF POSITIVE J LCHMN POL PSITION 1358F LSF EVERGREEN 36F LA362	BW 72 lbs. BR 96 WW 587 lbs. WR 99
OLC KING ROB L326 OLC LANA N482 OLC LANA L515	LMAN KING ROB 8621 OLC BITTERROOT H822 LMAN KING ROB 8621 BECKTON LANA D418 SC	

CED	BW	WW	YW	MILK	TM	ME	HPG	CEM	STAY	MARB	YG	CW	REA	FAT
9	-3.7	18	51	20	29	7	10	7	8	-0.06	-0.05	26	0.16	0.02

This heifer traces back to the Lana cow family bred for generations by Oates Land & Cattle. She is a larger framed calf that is easy fleshing with a square made hip and lots of style.



Bar G Lana Y482 • Lot 65



Bar G Abigrace Y100 • Lot 66

Lot 66 BAR G ABIGRACE Y100

Open Heifer

Reg. #: 1428553

Calved: 02/18/2011

Tattoo: Y100 B5G

1A 100.0%

LJC MISSION STATEMENT P27
TBR MISSION STATEMENT U323
BECKTON BELGA M744 EP

LJC LANCER 806
LJC HANNAH 106
BECKTON EPIC KJ J722
BECKTON BELGA F698 NP

LSF COMBINATION A301M
BDEE MS ABIGRACE 8100 ET
BROWN-CBAR MS ABIGRACE P7948

LCHMN TOP BRASS 1049H
WHF LASS 27G-29J
BFCK CHEROKEE CNYN 4912
BROWN MS ABIGRACE L7730

BW 77 lbs.
BR 106
WW 575 lbs.
WR 97

CED	BW	WW	YW	MILK	TM	ME	HPG	CEM	STAY	MARB	YG	CW	REA	FAT
-1	0.8	42	80	8	29	9	13	0	11	0.13	-0.02	50	0.30	0.01

Y100 is a great-granddaughter to the famed "Abigrace" cow at the RA Brown Ranch. She carries the thickness and muscle expression known for that cow family. This is a stacked pedigree with far more than the Abigrace influence to add value.



Bar G Abigail Y612 • Lot 67

Lot 67 BAR G ABIGAIL Y612

Open Heifer

Reg. #: 1428554

Calved: 01/01/2011

Tattoo: Y612 B5G

1A 100.0%

MLK CRK CUB 722
RED CROWFOOT OLE'S OSCAR
RED CROWFOOT OMEGA 9179J

GLACIER CUB 446
MLK CRK LAKOTA 152-HOBO
RED PRICE 631
RED OMEGA 7456'

LCC CHEYENNE B221L
GMM MS CHEYENNE S3612
BROWN MS JULIA M7788

BFCK CHEROKEE CNYN 4912
HXC 701G
BJR MONU 4X-303
RABS MS JULIAN H7059

BW 65 lbs.
BR 88
WW 563 lbs.
WR 95

CED	BW	WW	YW	MILK	TM	ME	HPG	CEM	STAY	MARB	YG	CW	REA	FAT
9	-4.4	32	65	19	34	7	7	11	10	0.36	0.09	33	-0.19	0.02

Y612 is deep-ribbed, long-bodied, calf with a lot of capacity. The Oscar progeny are in hot demand because so few are offered for sale. She is definitely the front pasture kind and a donor prospect. Take a look at how well balanced the EPD's are on this heifer!!



Bar G Abigail Y908
Lot 68

Lot 68 BAR G ABIGAIL Y908

Open Heifer

Reg. #: 1428555

Calved: 01/01/2011

Tattoo: Y908 B5G

1A 100.0%

BW 64 lbs. • WW 512 lbs.

Lot 69 BAR G ABIGAIL Y932

Open Heifer

Reg. #: 1428556

Calved: 02/13/2011

Tattoo: Y932 B5G

1A 100.0%

RED SIX MILE AVIATOR 217P
RED SIX MILE SAKIC 832S
RED SIX MILE SIERA 257P

RED WILDMAN DENALI 19L
RED RSL SUE 400F
RED SIX MILE CUJO 800M
RED BOUNTY B MISS SIERA BAR

LCC CHEYENNE B221L
GMM MS CHEYENNE S3612
BROWN MS JULIA M7788

BFCK CHEROKEE CNYN 4912
HXC 701G
BJR MONU 4X-303
RABS MS JULIAN H7059

BW 74 lbs.
BR
WW 555 lbs.
WR

CED	BW	WW	YW	MILK	TM	ME	HPG	CEM	STAY	MARB	YG	CW	REA	FAT
4	-1.1	40	71	20	40	3	12	9	12	-0.09	0.08	41	-0.27	-0.01

Y932 and Y908 are full sibs and very stylish made heifers. Lots of balance in their EPD's with a splash of fresh genetics for our breed with Sakic's influence. These heifers along with Lot 66 are maternal sisters to the highest selling bull in the 2011 Red Alliance sale.



Bar G Abigail Y932 • Lot 69

Lot 69A EMBRYO PACKAGE

Embryos

Sire Reg. #: 1160318 — Dam Reg. #: 1106553

RED SIX MILE AVIATOR 217P RED SIX MILE SAKIC 832S RED SIX MILE SIERA 257P	RED WILDMAN DENALI 19L RED RSL SUE 400F RED SIX MILE CUJO 800M RED BOUNTY B MISS745A BAR
LCC CHEYENNE B221L GMM MS CHEYENNE S3612 BROWN MS JULIA M7788	BFCK CHEROKEE CNYN 4912 HXC 701G BJR MONU 4X-303 RABS MS JULIAN H7059

Projected EPDs:

CED	BW	WW	YW	MILK	TM	ME	HPG	CEM	STAY	MARB	YG	CW	REA	FAT
4	-1.1	40	71	20	40	3	12	9	12	-0.09	0.08	41	-0.27	-0.01

Full sib embryos to Lots 67 and 68. Offering a package of 5 embryos with a guarantee of 2 pregnancies if implanted by a certified embryologist.



GMM Ms Cheyenne S3612 • Dam of Lots 67-69

Lot 70 BAR G VICILA Y931

Open Heifer

Reg. #: 1428557 Calved: 01/22/2011 Tattoo: Y931 B5G 1A 100.0%

MLK CRK CUB 722 RED CROWFOOT OLE'S OSCAR RED CROWFOOT OMEGA 9179J	GLACIER CUB 446 MLK CRK LAKOTA 152-HOBO RED PRICE 631 RED OMEGA 7456*
BJR MONU 4X-303 BROWN MS MONU P7931 RABS MS VICILA H7552	RED SSS MONU4X 237C RCRA SAMANTHA BECKTON JULIAN GG B571 LEACHMAN VICILA 7709

BW 73 lbs.
BR 97
WW 605 lbs.
WR 103

CED	BW	WW	YW	MILK	TM	ME	HPG	CEM	STAY	MARB	YG	CW	REA	FAT
8	-2.8	36	69	15	33	5	5	10	10	0.12	0.00	38	0.07	0.01

This heifer is a natural calf sired by Ole Oscar. She is naturally thick and powerful like her dam. Ms Monu P7931 was purchased as a three year old elite donor cow for \$12,000 at RA Brown Ranch's 2007 sale. She is long bodied with tremendous muscle expression and high volume along with a fancy feminine front. She has been a prolific donor cow.



Bar G Vicila Y931 • Lot 70

Lot 71 BAR G VICILA Y714

Open Heifer

Reg. #: 1428558 Calved: 01/02/2011 Tattoo: Y714 B5G 1A 100.0%

RD TER-RON FULLY LOADED 540R RED 6 MILE FULL THROTTLE171T RED SIX MILE WITZEL 360J	RED HEARTLAND KNIGHT CHARM 1 RED TER-RON GOLDIE 240L RED PASQUIA ARAB 28E RED C Y WITZEL 392Z
BJR MONU 4X-303 BROWN MS MONU P7931 RABS MS VICILA H7552	RED SSS MONU4X 237C RCRA SAMANTHA BECKTON JULIAN GG B571 LEACHMAN VICILA 7709

BW 68 lbs.
BR
WW 566 lbs.
WR

CED	BW	WW	YW	MILK	TM	ME	HPG	CEM	STAY	MARB	YG	CW	REA	FAT
3	0.2	39	75	15	34	2	8	3	13	-0.06	0.01	45	-0.01	-0.01

This heifer is exactly what we envisioned when we mated Ms Monu P7931 to the 2009 World Angus Forum Grand Champion bull, Full Throttle. She is moderate framed with tremendous thickness and muscle expression. She shares the depth of body and long hip with her sire. She is a definite donor prospect and maybe the best heifer we have ever raised. The dam, Ms Monu P7931 was purchased as a three year old elite donor cow for \$12,000 at RA Brown Ranch's 2007 sale. She is long bodied with tremendous muscle expression and high volume along with a fancy feminine front. She has been a prolific donor cow.



Bar G Vicila Y714 • Lot 71

Lot 71A EMBRYO PACKAGE

Sire Reg. #: 1232884 — Dam Reg. #: 1003204

Sire: **RED 6 MILE FULL THROTTLE171T**

Dam: **BROWN MS MONU P7931**

Projected EPDs:

CED	BW	WW	YW	MILK	TM	ME	HPG	CEM	STAY	MARB	YG	CW	REA	FAT
3	0.2	39	75	15	34	2	8	3	13	-0.06	0.01	45	-0.01	-0.01

These embryos are full sibs to Lot 70. Offering a package of 3 embryos with a guarantee of 1 pregnancy if implanted by a certified embryologist.

Lot 71B EMBRYO PACKAGES

Sire Reg. #: 1371780 — Dam Reg. #: 1003204

Sire: **SIX MILE WIN-CHESTER 745W**

Dam: **BROWN MS MONU P7931**

Projected EPDs:

CED	BW	WW	YW	MILK	TM	ME	HPG	CEM	STAY	MARB	YG	CW	REA	FAT
4	-0.3	34	63	16	33	2	9	2	13	-0.06	-0.08	37	0.12	-0.01

Offering 2 packages:

Lot 71B-1: Offering a package of 5 embryos with a guarantee of 2 pregnancies if implanted by a certified embryologist.

Lot 71B-2: Offering a package of 3 embryos with a guarantee of 1 pregnancy if implanted by a certified embryologist.



Brown Ms Monu P7931 • Dam of Lot 71

Lot 72 BAR G VICILA Y904

Open Heifer

Reg. #: 1428562

Calved: 01/02/2011

Tattoo: Y904 B5G

1A 100.0%

BW 72 lbs. • WW 579 lbs.

Lot 73 BAR G VICILA Y018

Open Heifer

Reg. #: 1428563

Calved: 03/09/2011

Tattoo: Y018 B5G

1A 100.0%

RED SIX MILE AVIATOR 217P
RED SIX MILE SAKIC 832S
RED SIX MILE SIERA 257P

RED WILDMAN DENALI 19L
RED RSL SUE 400F
RED SIX MILE CUJO 800M
RED BOUNTY B MISS SIERA BAR

BW 64 lbs.
BR
WW 512 lbs.
WR

BJR MONU 4X-303
BROWN MS MONU P7931
RABS MS VICILA H7552

RED SSS MONU4X 237C
RCRA SAMANTHA
BECKTON JULIAN GG B571
LEACHMAN VICILA 7709

CED	BW	WW	YW	MILK	TM	ME	HPG	CEM	STAY	MARB	YG	CW	REA	FAT
4	-0.5	40	69	17	37	1	11	8	13	-0.33	-0.04	41	-0.01	-0.02

Y904 and Y018 are ET calves sired by Sakic. Both should make excellent brood cows. Great numbers and developed the way you would do it at home.



Bar G Vicila Y904
Lot 72



Bar G Vicila Y018 • Lot 73



Red Towaw Indeed 104H • Semen sells as Lot 74

Lot 74 RED TOWAW INDEED 104H

Semen

Reg. #: 1234513

Calved: 03/02/1998

Tattoo: 104H WDV

1A 100.0%

BUF CRK COPPERTP 1665
GLACIER DIVIDE 310
GLACIER LASS

COPPER TOP CHIEF 301
BFLO CRK PNEMARIE 446
CREEK SIDE COPPER
GLACIER REBALS 922

BW 95 lbs.
BR 100
WW 738 lbs.
WR 100

ARSF BOLD EDITION 2A
RED TOWAW MOLLY 67C
RED TOWAW MOLLY 34R

ACUMEN BOLD LEADER 30X
DOUBLE A GAMMER 15U
RED SSS CHEROKEE 557N
RED SADDLE HILLS MOLLY 43M

CED	BW	WW	YW	MILK	TM	ME	HPG	CEM	STAY	MARB	YG	CW	REA	FAT
-2	0.9	28	52	24	38	3	13	5	15	0.10	-0.01	33	-0.24	-0.03

What an opportunity! Six Mile Red Angus in Canada sold two 10 unit semen packages a couple of years ago. One stayed in Canada and A-1 and Bar G purchased the other. Red Towaw Indeed is a foundation sire for the successful Six Mile program and has been a definite breed changer. **Selling 2 units of semen.**

Lot 75 JCBB QUEEN MAKIN 09X

Open Heifer
Reg. #: 1409584 Calved: 12/30/2010 Tattoo: 009 JCBB 1A 100.0%

BIEBER MAKE MIMI 7249 BIEBER MAKIN HAY 9913 BIEBER ADELLE 8958	BJR MAKE MY DAY 981 BIEBER SIRENA 6708 BIEBER TITAN 6894 BIEBER ADELLE 7226	BW 65 lbs. BR 100 WW 573 lbs. WR 100
GLACIER LOGAN 210 FM QUEEN 710 FM/3K QUEEN 5214	BFLO CR VC CHIEF 105 GLACIER REBALAS LCC MAJOR LEAGUE A502M OLC QUEEN L400	

CED	BW	WW	YW	MILK	TM	ME	HPG	CEM	STAY	MARB	YG	CW	REA	FAT
4	-1.4	43	80	17	38	9	7	5	11	0.12	-0.05	46	0.11	-0.02

Talk about putting calving ease, performance, and carcass in one package, this Makin Hay daughter from the OLC Queen line puts it all together for you. She attractive and ready to breed to the bull of your choice. Makin Hay progeny have been in demand across the country.

Lot 77 JCBB JUDGE MATTIE 113Y

Open Heifer
Reg. #: 1409589 Calved: 01/27/2011 Tattoo: 113 JCBB 1A 100.0%

BECKTON JULIAN GG B571 MESSMER JUDGE 36N MESSMER ESTHER 2254	BKT JULIAN 7526 G BKT MARTA 9A13 JL GLACIER MARIAS 548 MESSMER ESTHER A900	BW 63 lbs. BR 95 WW 597 lbs. WR 96
BIEBER MAKE MIMI 7249 BDEE MATTIE 877 ET BDEE MATTIE 503	BJR MAKE MY DAY 981 BIEBER SIRENA 6708 LCHMN ENTERPRISE 1370H LSF MATTIE 8021 339	

CED	BW	WW	YW	MILK	TM	ME	HPG	CEM	STAY	MARB	YG	CW	REA	FAT
8	-0.2	38	70	19	39	7	8	7	11	0.28	-0.07	42	0.29	0.00

The second Judge heifer from the Mattie cow family. Most of her maternal family topped sales at over \$10,000 each. Her dam has an excellent udder with a lot of milk. She ranks in the top third for both performance and carcass. This is one to build a herd around.

Lot 79 HL ABBY RHODA 401Y

Open Heifer
Reg. #: 1406276 Calved: 02/03/2011 Tattoo: 401Y 44HL 1A 100.0%

RED SIX MILE AVIATOR 217P RED SIX MILE SAKIC 832S RED SIX MILE SIERA 257P	RED WILDMAN DENALI 19L RED RSL SUE 400F RED SIX MILE CUJO 800M RED BOUNTY B MISS SIERA BAR	BW 58 lbs. BR 86 WW 555 lbs. WR 99 YW 772 lbs. YR 93
CIRCLE A HIGH VOLTAGE 0473 TBR MS ABIGAIL R323 BROWN MS ABIGAIL M7783	HOLDEN HI HO 574 BJR MS STONY 4X-516 LCHMN BANDITO TRES1781H RABS MS JULIAN H7059	

CED	BW	WW	YW	MILK	TM	ME	HPG	CEM	STAY	MARB	YG	CW	REA	FAT
4	-2.0	32	54	20	36	3	11	9	9	-0.24	-0.11	35	0.14	-0.02

Wow, lots of genetic power here! Sakic stacked on a High Voltage dam. The number of breed greats in this pedigree is impressive, the renown BJR MS Stony 4X-516 just jumps out at you!



HL Carly 405Y • Lot 81

Lot 76 JCBB CINDY 110Y

Open Heifer
Reg. #: 1409586 Calved: 01/04/2011 Tattoo: 110 JCBB 1A 100.0%

BECKTON JULIAN GG B571 MESSMER JUDGE 36N MESSMER ESTHER 2254	BKT JULIAN 7526 G BKT MARTA 9A13 JL GLACIER MARIAS 548 MESSMER ESTHER A900	BW 68 lbs. BR 99 WW 593 lbs. WR 100
OLC KING ROB N441 C-BAR YONA T702 OLC YOD P444	LMAN KING ROB 8621 OLC ECHETA J165 GREER N601 CHIEF 95Y OLC YOD M307	

CED	BW	WW	YW	MILK	TM	ME	HPG	CEM	STAY	MARB	YG	CW	REA	FAT
5	0.1	33	63	19	36	6	11	8	11	0.21	-0.06	39	0.28	0.01

This Messmer Judge heifer has greatness on both sides of the family. With Julian on the top side, the maternal side goes back to 95Y bull along with the Echeta cow that Jim Shirm loved at Oates Land & Cattle.

Lot 78 JCBB CHLOE 120Y

Open Heifer
Reg. #: 1409587 Calved: 03/03/2011 Tattoo: 120 JCBB 1A 100.0%

MESSMER JOSHUA 019P MESSMER PACKER S008 MESSMER MILLIE 124P	BECKTON JULIAN GG B571 MESSMER PANDORA M186 VGW TOP PICK 130 MESSMER MILLIE 9416	BW 74 lbs. BR 92 WW 626 lbs. WR 98
BFCK CHEROKEE CNYN 4912 BDEE TWILIGHT 747 LSF TWILIGHT J1425 N3050	BUF CRK CHF 824-1658 MRM 1431 8611 9109 LCHMN GOLD ROBBER 1909E LSF TWILIGHT F608 J1425	

CED	BW	WW	YW	MILK	TM	ME	HPG	CEM	STAY	MARB	YG	CW	REA	FAT
2	-1.2	44	80	13	35	2	17	0	15	0.22	-0.05	46	0.35	0.01

This Packer daughter is a sleeper in the sale. She has minus BW, top 13% growth, and top 25% carcass, 1% HPG, and 7% STAY. Her mother weans one of the heaviest calves each year, and now combined with Packer for a proven carcass winner.

Lot 80 HL CHERRY PIE 402Y

Open Heifer
Reg. #: 1406278 Calved: 02/04/2011 Tattoo: 402Y 44HL 1A 100.0%

LCC MAJOR LEAGUE A502M TWG ML MVP 136T PELTONS MISS GWEN 0136K	BFCK CHEROKEE CNYN 4912 KRN REBA'S ROBIN NEO-SHO CAYMAN G563 PELTONS MISS BETTER 830	BW 77 lbs. BR 114 WW 566 lbs. WR 101 YW 888 lbs. YR 107
LSF COMBINATION A301M 3J MS CHERABELL S513 BAR S CHERABELL 6129	LCHMN TOP BRASS 1049H WHF LASS 27G-29J LMAN ROBIN HOOD 1174B JHE CHERABELLE 9S464	

CED	BW	WW	YW	MILK	TM	ME	HPG	CEM	STAY	MARB	YG	CW	REA	FAT
-4	2.7	48	88	4	28	13	13	2	8	0.05	0.04	50	0.07	0.01

Very nice heifer that with solid performance in a really tough year. You could build a solid foundation with heifers built like this one!

Lot 81 HL CARLY 405Y

Open Heifer
Reg. #: 1422348 Calved: 03/05/2011 Tattoo: 405Y 44HL 1A 100.0%

LCC MAJOR LEAGUE A502M TWG ML MVP 136T PELTONS MISS GWEN 0136K	BFCK CHEROKEE CNYN 4912 KRN REBA'S ROBIN NEO-SHO CAYMAN G563 PELTONS MISS BETTER 830	BW 83 lbs. BR 105 WW 605 lbs. WR 94 YW 854 lbs. YR 94
ARROWHEAD BJR GATEWAY L103 PAULS MATTIE 557 LCC MATTIE K1267	LCHMN HEVN'S SAKE 1002F LARSON CRIS 926 LCHMN NO EQUAL 1174D LEACHMAN MATTIE F1272	

CED	BW	WW	YW	MILK	TM	ME	HPG	CEM	STAY	MARB	YG	CW	REA	FAT
2	1.2	41	73	13	34	6	11	4	11	-0.02	0.01	45	0.05	0.00

Excellent performance and really well balanced set of EPD's. This is a herd building type of heifer that will be tough to find over the next couple of years. Take advantage of the opportunity now!

Lot 82 HL REVELATION FLORA 409Y

Open Heifer

Reg. #: 1422352 Calved: 03/16/2011 Tattoo: 409Y 44HL 1A 100.0%



Code Bodi • Lot 83

CCF SEQUOYA 0361 HUST CHIEF SEQUOYA R336 LCC REBELLA NA123	BFCK CHEROKEE CNYN 4912 CCF QUEEN JEWEL 904 03 BECKTON JULIAN GG B571 LCC REBAS ROBIN LA969	BW 80 lbs. BR 103 WW 678 lbs. WR 106 YW 956 lbs. YR 106
BROWN REVELATION P7021 LCF FLORA 076T MFIN MISS K91	BFCK CHEROKEE CNYN 4912 BROWN MS VICILA M7799 BADLANDS MR BEEF 805 MFIN FINCH'S FLORA G34	

CED	BW	WW	YW	MILK	TM	ME	HPG	CEM	STAY	MARB	YG	CW	REA	FAT
10	-0.8	49	91	19	43	7	11	3	12	0.08	-0.10	48	0.27	-0.02

Really interesting pedigree and a set of numbers that will just knock your lights out. BW EPD of 0.8 to YW EPD of 91? Seriously? How many of these will you find this Spring?

Lot 83 CODE BODI

Open Heifer

Reg. #: 1471093 Calved: 02/17/2011 Tattoo: 1116 4MC 1A 100.0%



Fat Duke • Lot 84

VGW GAME PLAN 508 PIE CODE RED 905B PIE STORMY 541	LCC IMF B054M VGW PT- DORY 0361 LCB HOSS A444N PIE STORMY BEEFMAKER 327	BW 75 lbs. BR 103 WW 650 lbs. WR 114
PIE GET R DONE 684 TKP BODI 819B LOG PUREWATER BODI 28L	PIE CHICAWA 366 PIE RED RUBY 4094 TKP BODACIOUS 693 LOG MS IMP 428	

CED	BW	WW	YW	MILK	TM	ME	HPG	CEM	STAY	MARB	YG	CW	REA	FAT
	1.3	48	85	15	39		11		10	0.13	-0.03	49	0.13	-0.02

Solid heifer that is square made with a good hip on her. Code Red on top of Get R Done represents powerful genetics and it shows in the final package.

Lot 84 FAT DUKE

Open Heifer

Reg. #: 1471122 Calved: 02/04/2011 Tattoo: 1129 4MC 1A 100.0%

RED SVR GANGSTER 14S RED NORTHLINE FAT TONY 605U RED NORTHLINE RUBY 0305N	RED GEIS HI HO 180'04 RED DWAJO DUCHESS 75M RED NORTHLINE ROB ROY 122K RED NORTHLINE RUBY 305K	BW 70 lbs. BR 99 WW 600 lbs. WR 101
TPIE WAGONMASTER 753 4MC DUKE MISS 902 TPIE DUKE MISS 7158	PIE GRIDMASTER 589 BASIN ENCHANTRESS 1902 VGW GAME PLAN 508 TPIE DUKE MISS 410	

CED	BW	WW	YW	MILK	TM	ME	HPG	CEM	STAY	MARB	YG	CW	REA	FAT
	0.0	40	71	10	30				11	-0.04	-0.09	42	0.17	-0.02

There will be very, very few Fat Tony heifers to sell this year. If you want one you better pay attention when she enters the ring. Lots of length and style!

Lot 85 WO ELITE 0060

Open Heifer

Reg. #: 1465787 Calved: 2/10/2011 Tattoo: 0060 WEOR 1A 100.0%

BFCK CHEROKEE CNYN 4912 3J CANYON RIDGE S157 2022 JAN MILLER CHIEF	BUF CRK CHF 824-1658 MRM 1431 8611 9109 JDW CHEROKEE CHIEF 877 JAN 9707 SUPERIOR CHIEF	BW 75 lbs. BR 100 WW 561 lbs. WR 98
BB 6561 JULIAN 6768 MS OSLAND PRIDE 111 MS OSLAND PRIDE	BB JULIAN BBRED 6561 BB 5924 BBRED 6089 BBBB 6502 BBRED 6910 BBBB 500 BBRED 6960	

CED	BW	WW	YW	MILK	TM	ME	HPG	CEM	STAY	MARB	YG	CW	REA	FAT
0.2	22	36	17	28		11			9	-0.04	-0.11	24	0.14	-0.01

This long and deep-bodied, maiden heifer has the makings of a great herd cow.

Lot 86 WO ROXY ROBO 0061

Open Heifer

Reg. #: 1465799 Calved: 02/10/2011 Tattoo: 0061 WEOR 1A 100.0%

OHRR-K-RA 9J ROBO GOLD 10R 3J RED ROBO U299 CGM SANDIE PRESS 299	OHRR 9502 MR ROBUST 18N OHRR 388 GOLD PENNY 9J CGM 213 SANDIA CHIEF278 CGM 213 SANDUA PR 277	BW 61 lbs. BR 94 WW 595 lbs. WR 100
3J LEAGUE OF MOJO T163 WO MOJOS PRIDE LADY RED	COLEY'S MOJITO 503R HVR VERDALE 505 DJH RED BUSTER 334 OSLAND BEAUTY	

CED	BW	WW	YW	MILK	TM	ME	HPG	CEM	STAY	MARB	YG	CW	REA	FAT
1.2	33	61	18	35					8					

This long and deep-bodied, maiden heifer has the makings of a great herd cow. A February heifer with Major League and Coley's Mojito bloodlines. This heifer will bring some of the top bloodlines in the breed to your herd.

Lot 87 WO ELLIE 0064

Open Heifer
Reg. #: 1465793 Calved: 02/15/2011 Tattoo: 0064 WEOR 1A 100.0%

BIM MMD 610 JDW WAR CHEST 15W DJW PEGGY SUE 27N	BJR MAKE MY DAY 981 BIM 4X PESO 544 BIEBER GRANDSTAND 6874 JDW DREAM GILR 25H	BW 72 lbs. BR 100 WW 563 lbs. WR 101
DJH RED BUSTER 334 MS EMILY 0019 OSLAND BEAUTY	BJR HEARTLAND 028 HALFMAN-BLOCKBUSTER 545 BB 343 BBRED 6954 MS OSLAND PRIDE	

CED	BW	WW	YW	MILK	TM	ME	HPG	CEM	STAY	MARB	YG	CW	REA	FAT
	0.2	37	64	14	33				8					

Super-feminine heifer out of top producing cow line at Osland Red Angus. Would be a great cornerstone in any breeding program.

Lot 89 WO SCARLET 0069

Open Heifer
Reg. #: 1465788 Calved: 02/18/2011 Tattoo: 0069 WEOR 1A 100.0%

BFCK CHEROKEE CNYN 4912 3J CANYON RIDGE S157 2022 JAN MILLER CHIEF	BUF CRK CHF 824-1658 MRM 1431 8611 9109 JDW CHEROKEE CHIEF 877 JAN 9707 SUPERIOR CHIEF	BW 77 lbs. BR 103 WW 535 lbs. WR 96
DJH RED BUSTER 334 LADY RED OSLAND BEAUTY	BJR HEARTLAND 028 HALFMAN-BLOCKBUSTER 545 BB 343 BBRED 6954 MS OSLAND PRIDE	

CED	BW	WW	YW	MILK	TM	ME	HPG	CEM	STAY	MARB	YG	CW	REA	FAT
	1.4	29	49	14	28		9		9	-0.02	-0.08	33	0.11	-0.01

Dark-colored, heavy-fleshing heifer that is sure to bring improvement to your cow herd.

Lot 91 BO MINNIE MOUSE 0084

Open Heifer
Reg. #: 1465794 Calved: 03/23/2011 Tattoo: 0084 WEOR 1A 100.0%

LJC MISSION STATEMENT P27 TBR QUARTERBACK U216 WRAF CHERABELL	LJC LANCER 806 LJC HANNAH 106 TENN PRINCE ELWAY JCLR CHERABELL 6E	BW 75 lbs. BR 112 WW 570 lbs. WR 102
GLACIER CHATEAU 744 993 JCB 784 GLACIER CHATEAU SAR EYE CANDY 712T	LMAN KING ROB 8621 GLACIER REBALA PAULS CANYON RIDGE 470 BWODEN CANDY JR. C204	

CED	BW	WW	YW	MILK	TM	ME	HPG	CEM	STAY	MARB	YG	CW	REA	FAT
	1.1	42	78	17	38		10		12	0.11	-0.15	42	0.34	-0.03

Large-framed, feminine heifer carrying fantastic EPD numbers. With WW and YW numbers in the top 15-17% of the breed, this female will produce fast-growing calves.

Lot 93 BO PRETTY GIRL 0088

Open Heifer
Reg. #: 1465801 Calved: 04/10/2011 Tattoo: 0088 WEOR 1A 100.0%

BFCK CHEROKEE CNYN 4912 3J CANYON RIDGE S157 2022 JAN MILLER CHIEF	BUF CRK CHF 824-1658 MRM 1431 8611 9109 JDW CHEROKEE CHIEF 877 JAN 9707 SUPERIOR CHIEF	BW 85 lbs. BR 115 WW 600 lbs. WR 108
CGM SANDIA CHIEF 213 CGM 213 SANDIE PRIE 292 NABOURS 193	SANDIA CHIEF 626 BIEBER LASS 4187 THUNDER AND LIGHTNING LEACHMAND DINA 7033	

CED	BW	WW	YW	MILK	TM	ME	HPG	CEM	STAY	MARB	YG	CW	REA	FAT
	1.9	27	43	17	31		9		8	0.08	-0.17	19	0.09	-0.03

This ultra-fancy, April-born heifer is extremely feminine. An asset to any breeding program.

Lot 88 WO JEWEL 0066

Open Heifer
Reg. #: 1465786 Calved: 02/17/2011 Tattoo: 0066 WEOR 1A 100.0%

BFCK CHEROKEE CNYN 4912 3J CANYON RIDGE S157 2022 JAN MILLER CHIEF	BUF CRK CHF 824-1658 MRM 1431 8611 9109 JDW CHEROKEE CHIEF 877 JAN 9707 SUPERIOR CHIEF	BW 87 lbs. BR 116 WW 589 lbs. WR 102
BB 343 BBRED 6954 OSLAND BEAUTY MS OSLAND PRIDE	BIM LRH PIOUS BB 6318 DOMINATOR 6621 BBBB 6502 BBRED 6910 BBBB 500 BBRED 6960	

CED	BW	WW	YW	MILK	TM	ME	HPG	CEM	STAY	MARB	YG	CW	REA	FAT
	3.2	32	51	15	31		10		9	-0.08	-0.12	28	0.16	-0.01

This well-built, heavy fleshing female is long and thick throughout, and she would make a great cow prospect.

Lot 90 WO SISSY 0080

Open Heifer
Reg. #: 1465789 Calved: 03/08/2011 Tattoo: 0080 WEOR 1A 100.0%

OHRR-K-RA 9J ROBO GOLD 10R 3J RED ROBO U299 CGM SANDIE PRESS 299	OHRR 9502 MR ROBUST 18N OHRR 388 GOLD PENNY 9J CGM 213 SANDIA CHIEF278 CGM 213 SANDUA PR 277	BW 64 lbs. BR 88 WW 585 lbs. WR 105
DJH RED BUSTER 334 OZZYS SPOILED GIRL OZ'S LITTLE REDHEAD	BJR HEARTLAND 028 HALFMAN-BLOCKBUSTER 545 BB 6561 JULIAN 6768 BBBB 500 BBRED 6960	

CED	BW	WW	YW	MILK	TM	ME	HPG	CEM	STAY	MARB	YG	CW	REA	FAT
	-0.9	25	49	20	32				7					

This March heifer hit the ground at a low 64lbs and hasn't stopped growing. With a negative BW EPD this heifer will produce solid calves, built to grow.

Lot 92 BO CLEO 0075

Open Heifer
Reg. #: 1465796 Calved: 02/27/2011 Tattoo: 0075 WEOR 1A 100.0%

LJC MISSION STATEMENT P27 TBR QUARTERBACK U216 WRAF CHERABELL	LJC LANCER 806 LJC HANNAH 106 TENN PRINCE ELWAY JCLR CHERABELL 6E	BW 62 lbs. BR 96 WW 527 lbs. WR 94
DJH DIAMOND PONDEROSA 314 DJH CLEO BJR LONK QUEEN JWL L198	BLUE RIDGE PONDEROSA RSLND REBELLA 106-502 DKK POWER SURGE 708 BJR QUEEN JEWEL 902	

CED	BW	WW	YW	MILK	TM	ME	HPG	CEM	STAY	MARB	YG	CW	REA	FAT
	0.1	34	70	18	35		10		10	0.13	-0.09	48	0.30	-0.02

A long-bodied female, loaded with carcass traits. This heifer carries Mission Statement bloodlines, a popular and top producing Red Angus sire, known for producing deep-bodied, easy fleshing females.

Lot 94 KEEPER CUB

Open Heifer
Reg. #: 1471139 Calved: 02/11/2011 Tattoo: 1184 4MC 1A 100.0%

CCR CUB 107-518 VOS CUB 336-936 VOS CHEROK 336	MLK CRK CUB 722 CCR EASY MAID 920-107 HOLDEN HI HO 7151 BRYLOR BJR CHEROK 63J	BW 75 lbs. BR 104 WW 586 lbs. WR 103
VOS MONU 4X 503-415 CCR SHES A KEEPER 333-840 CCR SHOCKER 065-333	BJR MONU 4X-303 AQUILA 503 BJR SHOCKER 073 AQUILA 065	

CED	BW	WW	YW	MILK	TM	ME	HPG	CEM	STAY	MARB	YG	CW	REA	FAT
	1.3	37	74	17	35				7	-0.17	0.01	47	-0.06	-0.02

A good herd building type of heifer that has a solid future producing calves that will pay off in a big way over the next several years. She has an almost perfect milk EPD for raising fast growing calves!

Lot 95 WW BAILEY Y59

Open Heifer

Reg. #: 1471887 Calved: 04/08/2011 Tattoo: Y59 3JF 1A 100.0%



JCBB Sulphur Queen 086X • Lot 96

BADLANDS ALL BEEF 114J
BADLANDSPFFRBEEFMAKER638
 PFFR CEDAR 3006

BADLANDS MR BEEF 805
 RBRTS BELGA 5126
 LCHMN BULLSEYE 1379G
 BADLANDS CEDAR 624

RBJR ADVANCE A709
ADVANCING MISS IOWA 420P
 PIE MISS IOWA 8162

T3 CHIEF 2887
 ROY ADVANCE A209
 PIE BD 6002
 PIE MS IOWA DUKE 6062

BW 89 lbs.
 BR 116
 WW 496 lbs.
 WR 93

CED	BW	WW	YW	MILK	TM	ME	HPG	CEM	STAY	MARB	YG	CW	REA	FAT
	5.1	49	85	12	37	8	9		7	0.05	-0.04	53	0.16	-0.02

One of the youngest heifers in the sale this year. She will grow into a good one for the lucky buyer.

Lot 96 JCBB SULPHUR QUEEN 086X

Bred Heifer

Reg. #: 1409577 Calved: 10/15/2010 Tattoo: 086 JCBB 1A 100.0%

HOLDEN HI HO 574
HOLDEN HI HO 7151
 DOUBLE FORK 061C

BJR HI HO 916
 BECKTON EOLA Z025 CB
 LEACHMAN MONU 2X 8096
 DOUBLE FORK 010U

BECKTON LANCER F442 T
3J MS MAKELENA S566
 BROWN MS MAKE MY DAY L6

BECKTON LANCER T A664
 BKT SUFFEINA A828 DM
 BJR MAKE MY DAY 981
 RABR MS SUPERMAN H6525

WW 590 lbs.
 WR 100
 YW 905 lbs.
 YR 100

CED	BW	WW	YW	MILK	TM	ME	HPG	CEM	STAY	MARB	YG	CW	REA	FAT
5	0.4	39	69	7	26	-1	6	4	9	0.06	-0.13	42	0.22	-0.03

Take a look at this heifer out of Hi Ho and dam from Lot 107. AI bred to Big Sky and PE to Avitar (1422496).

Lot 97 JCBB VELVET 097X

Bred Heifer

Reg. #: 1409581 Calved: 11/28/2010 Tattoo: 097 JCBB 1A 100.0%

BECKTON JULIAN GG B571
HXC BRUTE FORCE 6600S
 HXC 400P

BKT JULIAN 7526 G
 BKT MARTA 9A13 JL
 BECKTON LANCER F442 T
 HXC 701G

BADLANDS BIG TIMBER 615
3J MS LUCKY U63
 3J LUCKY MILLIE R316

UBAR SEQUOIA 202
 MEADOW CK MS SEAMAN 31A
 0102 JAN MILLER CHIEF
 MS NSF LUCKY N285

BW 62 lbs.
 BR 100
 WW 522 lbs.
 WR 100
 YW 765 lbs.
 YR 100

CED	BW	WW	YW	MILK	TM	ME	HPG	CEM	STAY	MARB	YG	CW	REA	FAT
6	-0.4	29	55	12	27	-0	10	7	13	0.00	-0.07	33	0.30	0.02

Here's one of the few HXC Brute Force daughters in the market. He's one of the breed's most intriguing sires that combines elite calving ease, maternal ability and a masculine phenotype. AI bred 1/14/12 to Big Sky and PE to Avitar (1422496).

Lot 98 3J MS JULIE X103 [MAF]

Bred Heifer

Reg. #: 1430231 Calved: 10/07/2010 Tattoo: X103 3JF 1A 100.0%

RED BRYLOR PASQUOLE 213P
RED BRYLOR SQUALL 230S
 RED CYT FANNY 15P

VGW RAMBLER 1000
 RED XXX LAKME 70M
 RED BRYLOR STALLION 46M
 RED PRIME TIME'S FANNY 5'00

GP CATALYST 025
3J MS JEWELYST S307
 FLW QUEEN JEWEL 329

GLACIER MARIAS 548
 BCRA MS DINA 9723
 BJR HI HO 916
 JRA JAMES 904

BW 56 lbs.
 BR 85
 WW 521 lbs.
 WR 102

CED	BW	WW	YW	MILK	TM	ME	HPG	CEM	STAY	MARB	YG	CW	REA	FAT
13	-3.0	34	61	15	32	4	12	11	12	-0.14	-0.01	32	-0.04	0.00

Can you say Squall....? Very low BW at 56 lb's and stacked on the dams side of pedigree. Calving ease deluxe no matter who you select as the sire. **AI bred to Northline Fat Tony 605U (1299911) on 11/29/11 and then exposed to 3J MAC W259 (1357737) from 12/25/11 – 2/15/12.**

Lot 99 3J MS DAISY X585

Bred Heifer

Reg. #: 1430220 Calved: 10/04/2010 Tattoo: X585 3JF 1A 100.0%

SHOCO SIR ROBIN
SHOCO DATA
 VDAR BLACKANA 303

LMAN ROBIN HOOD 1174B
 VDAR BARLEE GB 3
 FCC RAMBO 502
 BJR BLOCKNA2206-3149

BJR MAKE MY DAY 981
BROWN MS MAKE MY DAY L6
 RABR MS SUPERMAN H6525

BJR EASY RIDER 781
 BJR TOW KANA 117-710
 RABR SUPERMAN 427
 RABR MS HEAVENLY 401

BW 68 lbs.
 BR 101
 WW 541 lbs.
 WR 98

CED	BW	WW	YW	MILK	TM	ME	HPG	CEM	STAY	MARB	YG	CW	REA	FAT
5	0.4	37	63	13	31	8	9	6	9	0.22	-0.01	38	0.12	0.01

A really sharp bred heifer that has been developed slow and steady to prepare her for a tough working environment. **AI bred to Northline Fat Tony 605U (1299911) on 12/2/11 and then exposed to 3J MAC W259 (1357737) from 12/25/11 – 2/15/12.** This will be a hot ticket item on sale day!

Lot 100 3J MS ANGEL X18

Bred Heifer

Reg. #: 1430221 Calved: 08/27/2010 Tattoo: X18 3JF 1A 100.0%

RED NORTHLINE ROB ROY 122K RED DMM BRYLOR THUMP 2T RED STEN ESSENCE 42G	RED WILD ROSE ROBINHOOD 11F RED BAR EL SYBIL 122E DMM FLEX 24E KBJ FRAN 76A	BW 65 lbs. BR 100 WW 515 lbs. WR 100
HOLDEN HI HO 753 TED HOHO 102 EEE ANGEL	HOLDEN HI HO 574 BIEBER MIMI 4151 FFR 4TIMES HEAVENLY LAD EEE FANNY	

CED	BW	WW	YW	MILK	TM	ME	HPG	CEM	STAY	MARB	YG	CW	REA	FAT
2	-0.6	28	49	19	33	5	8	4	10	0.05	0.03	29	-0.05	0.02

Thump has proven to be a very good producer of stylish females and this one will be no exception. All of us would like to have one like this in our pastures. **AI bred to Northline Fat Tony 605U (1299911) on 12/2/11 and then exposed to 3J MAC W259 (1357737) from 12/25/11 – 2/15/12.**

Lot 102 3J MS THUMPACITY X292

Bred Heifer

Reg. #: 1430234 Calved: 09/10/2010 Tattoo: X292 3JF 1A 100.0%

RED NORTHLINE ROB ROY 122K RED DMM BRYLOR THUMP 2T RED STEN ESSENCE 42G	RED WILD ROSE ROBINHOOD 11F RED BAR EL SYBIL 122E DMM FLEX 24E KBJ FRAN 76A	BW 75 lbs. BR 113 WW 558 lbs. WR 102
BJR HIGH CAPACITY 008 3J MS DINA HIGH T292 CGM 213 SANDIE PRIE 292	BJR HI HO 916 JRA JAMES 904 CGM SANDIA CHIEF 213 NABOURS 193	

CED	BW	WW	YW	MILK	TM	ME	HPG	CEM	STAY	MARB	YG	CW	REA	FAT
3	1.5	34	64	11	29	6	10	4	8	0.14	0.03	41	-0.14	-0.01

Thump on top of a 008 dam, ...wow. That is a neat combination of outcross genetics! Special stuff here. **AI bred to Northline Fat Tony 605U (1299911) on 12/18/11 and then exposed to 3J MAC W259 (1357737) from 12/25/11 – 2/15/12.**

Lot 104 3J MS HONEY X6

Bred Heifer

Reg. #: 1388431 Calved: 01/26/2010 Tattoo: X6 3JF 1A 100.0%

RED NORTHLINE ROB ROY 122K RED DMM BRYLOR THUMP 2T RED STEN ESSENCE 42G	RED WILD ROSE ROBINHOOD 11F RED BAR EL SYBIL 122E DMM FLEX 24E KBJ FRAN 76A	BW 89 lbs. BR 108 WW 644 lbs. WR 98
UBAR HIGH CAPACITY 224 3J MS CAN CAN GAMBLE T54 SRN DESTINY 0020 ET	BJR HIGH CAPACITY 008 BJR BONNEBELL 7G GLACIER LOGAN 210 FARN RED DESTINY 712	

CED	BW	WW	YW	MILK	TM	ME	HPG	CEM	STAY	MARB	YG	CW	REA	FAT
-1	2.9	44	80	14	36	7	10	5	10	0.06	0.06	52	0.01	0.00

Very nice double dip on genetics by pairing Thump with 224. **Bred to Diamond THIPS Stout 107U on 6/13/11.**

Lot 101 3J MS BROOKS SPITFIRE [OSF]

Bred Heifer

Reg. #: 1421467 Calved: 09/27/2010 Tattoo: X218 3JF 1A 100.0%

BADLANDS ALL BEEF 114J BADLANDSPFFRBEEFMAKER638 PFFR CEDAR 3006	BADLANDS MR BEEF 805 RBRTS BELGA 5126 LCHMN BULLSEYE 1379G BADLANDS CEDAR 624	BW 62 lbs. BR 100 WW 558 lbs. WR 100
RED NORTHLINE ROB ROY 122K 3J MS ROY'S GIRL T 135 CANDY CANYON 303	RED WILD ROSE ROBINHOOD 11F RED BAR EL SYBIL 122E LCHMN GRANDCANYON 1244G PIE MISS IOWA 8162	

CED	BW	WW	YW	MILK	TM	ME	HPG	CEM	STAY	MARB	YG	CW	REA	FAT
1	2.3	41	80	20	40	9	10	5	7	0.08	-0.01	52	0.22	0.00

Folks are looking all over the country for bred heifers and can't find them but here they are. Don't miss an opportunity like this. Great breeding and bred, it is the perfect match! **AI bred to Northline Fat Tony 605U (1299911) on 12/16/11 and then exposed to 3J MAC W259 (1357737) from 12/25/11 – 2/15/12.**

Lot 103 3J MS TINABAR X113

Bred Heifer

Reg. #: 1430222 Calved: 10/20/2010 Tattoo: X113 3JF 1A 100.0%

BJR HIGH CAPACITY 008 UBAR HIGH CAPACITY 224 BJR BONNEBELL 7G	BJR HI HO 916 JRA JAMES 904 LARSON RED LIGHTNING RD BONNEBELL 5E	BW 53 lbs. BR 79 WW 493 lbs. WR 96
LEACHM.KING RODGE 1270F 3J TINA RODGE M99 3J LADY TINA	LMAN KING ROB 8621 BJR MATTIE 002-1102 SDR 4R11 LVL ALLSTAR TINA	

CED	BW	WW	YW	MILK	TM	ME	HPG	CEM	STAY	MARB	YG	CW	REA	FAT
8	-2.0	32	61	22	38	9	11	5	9	-0.17	-0.04	34	0.07	0.00

The High Capacity 224 females are just flat out good. You cannot beat them. **AI bred to Northline Fat Tony 605U (1299911) on 12/18/11 and then exposed to 3J MAC W259 (1357737) from 12/25/11 – 2/15/12.**

Lot 105 ADVANCEING MISS IOWA 420P

Bred Cow

Reg. #: 1017325 Calved: 10/24/2004 Tattoo: 420P 4RDB 1A 100.0%

T3 CHIEF 2887 RBJR ADVANCE A709 ROY ADVANCE A209	BIEBER CHIEFTON 2803 BIEBER HANNAH 2887 JKG MILK MAN Y962 PAMELA 1326	BW 72 lbs. BR 100 WW 681 lbs. WR YW 1092 lbs. YR
PIE BD 6002 PIE MISS IOWA 8162 PIE MS IOWA DUKE 6062	PIE BACK DRAFT PIE LASA LYNN BJR DUKE 5176-5116 SOR VALLEYLIC IOWA-1754	

CED	BW	WW	YW	MILK	TM	ME	HPG	CEM	STAY	MARB	YG	CW	REA	FAT
3	2.5	40	72	10	30	11	7	5	7	-0.14	0.00	47	-0.21	-0.04

The A709 females are well respected for their style and performance. This is a really nice bred cow for those who want proven performers. **AI bred to Brown Supreme (1379612) on 12/10/11 and then pasture exposed to 3J MANNAMAHER U109 (1269200) from 12/18/11-2/15/12.**

Lot 106 3J MS WILDFLOWER S91

Cow/Calf Pair

Reg. #: 1158898 Calved: 08/17/2006 Tattoo: S91 3JF 1A 100.0%

BUF CRK CHF 824-1658 BFCK CHEROKEE CNYN 4912 MRM 1431 8611 9109	BUF CRK CHIEF092-824 BFLO CRK CARIE VC473 BUF CRK CHEROKEE1431 MRM 8454 8219 8611	BW 66 lbs. BR WW 446 lbs. WR
JDW CHEROKEE CHIEF 877 2022 JAN MILLER CHIEF JAN 9707 SUPERIOR CHIEF	JDW 159 CHER CHF 433 JDW 249 CHIGAPRI 368 RP SUPERIOR 1223 JDW 60 TSGAPRIDE 100	

CED	BW	WW	YW	MILK	TM	ME	HPG	CEM	STAY	MARB	YG	CW	REA	FAT
7	-1.9	30	48	17	32	-2	10	-5	11	0.01	-0.17	26	0.14	-0.03

Here's a calving ease, low maintenance cow with carcass merit. She's EPD balanced to breed to a wide range of bulls. **AI bred to Soo Line Momentum (1406832) on 1/21/12** - leadoff, champion bull at Soo Lines dispersal sale. **Heifer calf (1467091) on side** sired out of ever popular Mission Statement (960383) on 11/21/11. Her only bull calf scanned a 4.19% IMF & 14.24 RIB.



3J Ms Wildflower S91 • Lot 106

Lot 107 3J MS MAKELENA S566

Cow/Calf Pair

Reg. #: 1158910 Calved: 08/23/2006 Tattoo: S566 3JF 1A 100.0%

BECKTON LANCER T A664 BECKTON LANCER F442 T BKT SUFFEINA A828 DM	BECKTON LANCER 9380 BECKTON COCA 9119 TJ BECKTON DOMINOR 9455 BKT SUFFEINA 9493 TT	BW 66 lbs. BR WW 428 lbs. WR
BJR MAKE MY DAY 981 BROWN MS MAKE MY DAY L6 RABR MS SUPERMAN H6525	BJR EASY RIDER 781 BJR TOW KANA 117-710 RABR SUPERMAN 427 RABR MS HEAVENLY 401	

CED	BW	WW	YW	MILK	TM	ME	HPG	CEM	STAY	MARB	YG	CW	REA	FAT
8	-1.9	28	51	9	23	-1	5	3	12	0.11	-0.22	28	0.20	-0.04

This is another low BW, low ME cow that has never missed on AI breeding. She's at the top of her game with a popular, sought after **heifer (1467092) at side out of the EPD monster LSF Expectation (1108741)**. He's got low BW, performance, and carcass. Heifer born 10/3/11. **Cow is confirmed AI bred to Neo-Sho Millenium (596263) on 1/2/12.**

Lot 107A JCBB SWEET DAY 141Y

Reg. #: 1467092 — Calved: 10/03/2011 — Tattoo: 141 JCBB — 1A 100.0%

Sire: **LSF JBOB EXPECTATION 6034S**

Dam: **3J MS MAKELENA S566**

CED	BW	WW	YW	MILK	TM	ME	HPG	CEM	STAY	MARB	YG	CW	REA	FAT
	-1.5	38	70	15	35	-1	8		11	0.50	-0.10	41	0.29	-0.01

The cow and calf will sell separately with the winning bidder having the option to select choice of either the cow or calf and doubling down to keep the family together.

Lot 108 933 CASH

Bred Cow

Reg. #: 1308245 Calved: 02/18/2009 Tattoo: 933 CASH 1A 100.0%

BFCK CHEROKEE CNYN 4912 CASH'S CHEROKEE CANYON 640 CASH'S NACHO 413	BUF CRK CHF 824-1658 MRM 1431 8611 9109 GLACIER CHATEAU 744 CASH'S NACHO 398	BW 72 lbs. BR 94 WW 482 lbs. WR 100 YW 583 lbs. YR 100
LJC EXCALIBER N26 TBR CALLIE R322 HONEST GIRL	BECKTON JULIAN GG B571 LJC LANCER 701 07 BJR JR 107 AQUILA 227	

CED	BW	WW	YW	MILK	TM	ME	HPG	CEM	STAY	MARB	YG	CW	REA	FAT
8	-2.6	32	59	19	34	5	11	2	15	0.18	-0.02	32	0.13	0.02

Really nice 3 year old bred cow that will be a special offering on sale day. There are not many of these around. The sire of this cow was a powerhouse from Dr. Eve Gerome's highly regarded program in Bonham, Texas. **Safe in calf to WSF MI ELWAY 1136 346W (1309765) with exposure dates from 6/15/11-1/2/12.**

Lot 109 CASH'S PICANTE 935

Bred Cow

Reg. #: 1310239 Calved: 03/06/2009 Tattoo: 935 CASH 1A 100.0%

LJC LANCER 806 LJC MISSION STATEMENT P27 LJC HANNAH 106	BECKTON LANCER T A664 LJC HB LIZZIE 606 HOLDEN HI HO 753 LJC KJ JAMIE 516	BW 67 lbs. BR 100 WW 508 lbs. WR 100 YW 755 lbs. YR 100
LCC MAJOR LEAGUE A502M CASH'S CALLIE 757 TBR CALLIE R322	BFCK CHEROKEE CNYN 4912 KRN REBA'S ROBIN LJC EXCALIBER N26 HONEST GIRL	

CED	BW	WW	YW	MILK	TM	ME	HPG	CEM	STAY	MARB	YG	CW	REA	FAT
1	-1.5	40	80	18	38	8	13	-3	15	0.22	-0.17	46	0.54	-0.01

Good gosh, a three year old Mission Statement daughter with Major League as the maternal sire! What is wrong with this picture? Nothing except a really outstanding opportunity! Once again, a power packed offering that originated from Dr. Gerome's program! **Safe in calf to WSF MI ELWAY 1136 346W (1309765) with exposure dates from 6/15/11-1/2/12.**

Commercial Females...

Lot 110-113 4 Commercial Open Heifers

Consigned by John Maceck. Set of 4 Red Angus heifers with a touch of ear to make it through those hot summers. King Rob and Javelin breeding. They should be around 900 lbs on sale day.

Lot 114 1 Commercial Open Heifer

Consigned by Ronnie Hart. Black, 50% Red Angus heifer.

Lots 115-121 7 Commercial Open Heifers

Consigned by Dorman Red Angus. Three Maine x Red Angus yearling heifers that will sell in one draft and then four straight Red Angus yearling heifers. Great set of replacement females!

Lots 122-124 3 Commercial Open Heifers

Consigned by Dan Hauser. Three Red Angus x Shorthorn open heifers. All three of these heifers will be solid red and weighing between 750-800 lbs. on sale day. These heifers will be good milking calf raising machines!

Lots 125-126 2 Commercial Open Heifers

Consigned by Osland Red Angus. Born Feb. 2011. Out of our leading herd sire, 3J Canyon Ridge S157, and are 3/4 Red Angus. On sale day, these heifers will be pushing 900lbs. Both heifers are long and deep bodied, an asset to any commercial herd.

Lots 127-134 8 Commercial Open Heifers

Consigned by Richard and Steve Whalen. Fantastic set of April and May born heifers that are very uniform. They will weigh close 775 – 800 lbs. by sale day and will be ready for a bull by early June. These heifers are 100% Red Angus and will make some of the fanciest replacement heifers found anywhere. Selling two groups of four.

Lot 135 1 Commercial Bred Heifer

Consigned by Dorman Red Angus. Very nice replacement bred heifer.

Lots 136-137 2 Commercial Bred Heifers

Consigned by Dan Hauser. Excellent pair of bred heifers that are 3/4 Red Angus x 1/4 Shorthorn. These girls will weigh approximately 900 lbs. and will come straight out of the pasture and into yours as non-pampered working class cattle.

Lots 138-149 12 Commercial Bred Heifers

Consigned by Jeff Earles. This is a really fancy set of bred heifers from 3J Farms that will weigh 1000 lbs. or more by sale day. Replacement bred heifers of this quality will be rare and hard to find. Six of these heifers will be AI bred which simply adds to the value. Lots 138-142 are AI bred to Red Brylor Toast and then exposed to 3J MAC W259. Lot 143 was AI'd to Fat Tony and then exposed to 3J MAC W259. Lots 144 – 149 were pasture bred to 3J MAC W259. All of these heifers will calve in October or November.

Lot 150 1 Commercial Bred Cow

Consigned by Dorman Red Angus. Sovereign x Pinnacle cow born 3/26/2004. Good solid experienced momma cow that will be short bred less than 90 days on sale day.

Sale Terms and Conditions

TERMS: Terms of the sale are cash, check, or other terms agreed to in writing between seller, buyer, and sale manager payable immediately upon conclusion of the sale before animals will be moved. Sale Manager reserves the right to require a certified check as settlement before releasing any cattle.

PURCHASER'S RISK: All animals are the owner's risk prior to their sale and become property of the purchaser as soon as declared sold by the auctioneer.

BIDDING: Any disputes or challenges regarding bids or tie bids will be settled by the auctioneer and his decision will be final.

CERTIFICATE OF REGISTRY: A certificate of registry for each animal will be transferred to the buyer at the seller's expense.

ANNOUNCEMENTS: Any errors or changes in information contained in the catalog will be announced from the block and such announcements shall take precedence over the information contained herein.

HEALTH: All animals are eligible for interstate shipment. Interstate health papers prepared by an accredited veterinarian will be furnished on each animal sold. Arrangements for International Shipment should be made with the sale manager prior to the auction. All efforts for the exportation of cattle can be arranged through the sale manager.

BREEDING GUARANTEE: All animals are guaranteed by the seller as outlined in the Red Angus Association of America Code of Ethical Sale Practices.

LIABILITIES: All persons who attend the sale do so at their own risk. The seller, auction facility, and sale manager assume no liability for any accidents that may occur. Neither does the seller, auction facility, or sale manager assume liability for the loss or injury to livestock due to theft, mysterious disappearance, sickness, improper handling or Act of God. It is to be clearly understood that the sale manager and its representatives act only as a medium between the buyer and the seller. They are not responsible in any way for the failure on the part of the buyer and seller to live up to their obligations or for the truth of any warranties or representation, express or implied. Neither does the sale manager assume any financial obligations to collect or enforce collection of monies between parties. Any legal action, that may in exceptional cases be taken, must be between the buyer and the seller. This catalog has been prepared by the sale Manager from pedigrees and information supplied by sources deemed reliable, however, the sale manager will in no way guarantee the pedigree, percentages of the animals selling, or data included in this catalog. Any exceptions taken are between the buyer and the seller.

CONTRACT: The above terms and conditions of sale shall constitute a contract between the buyer and seller of each animal and shall be equally binding upon both. Each sale or resale of an animal constitutes a separate transaction.

PHONE BIDS: Telephone bids will be taken by the sale manager. Kyle Gilchrist's cell number is (641) 919-1077.



Gilchrist Auction Co.

Kyle Gilchrist: 641/919-1077

14075 120th St. • Douds, IA 52551

A production of
Star G Ranch, Inc.

redcowseller@yahoo.com



**TIME DATED MATERIAL
DO NOT DELAY!!**



ALLIANCE

11th Annual Spring Production Sale

Saturday, March 10, 2012 • Noon

Heart of Oklahoma Exposition Center • Shawnee, Oklahoma